

Corrente rispetto a quota -1,25m

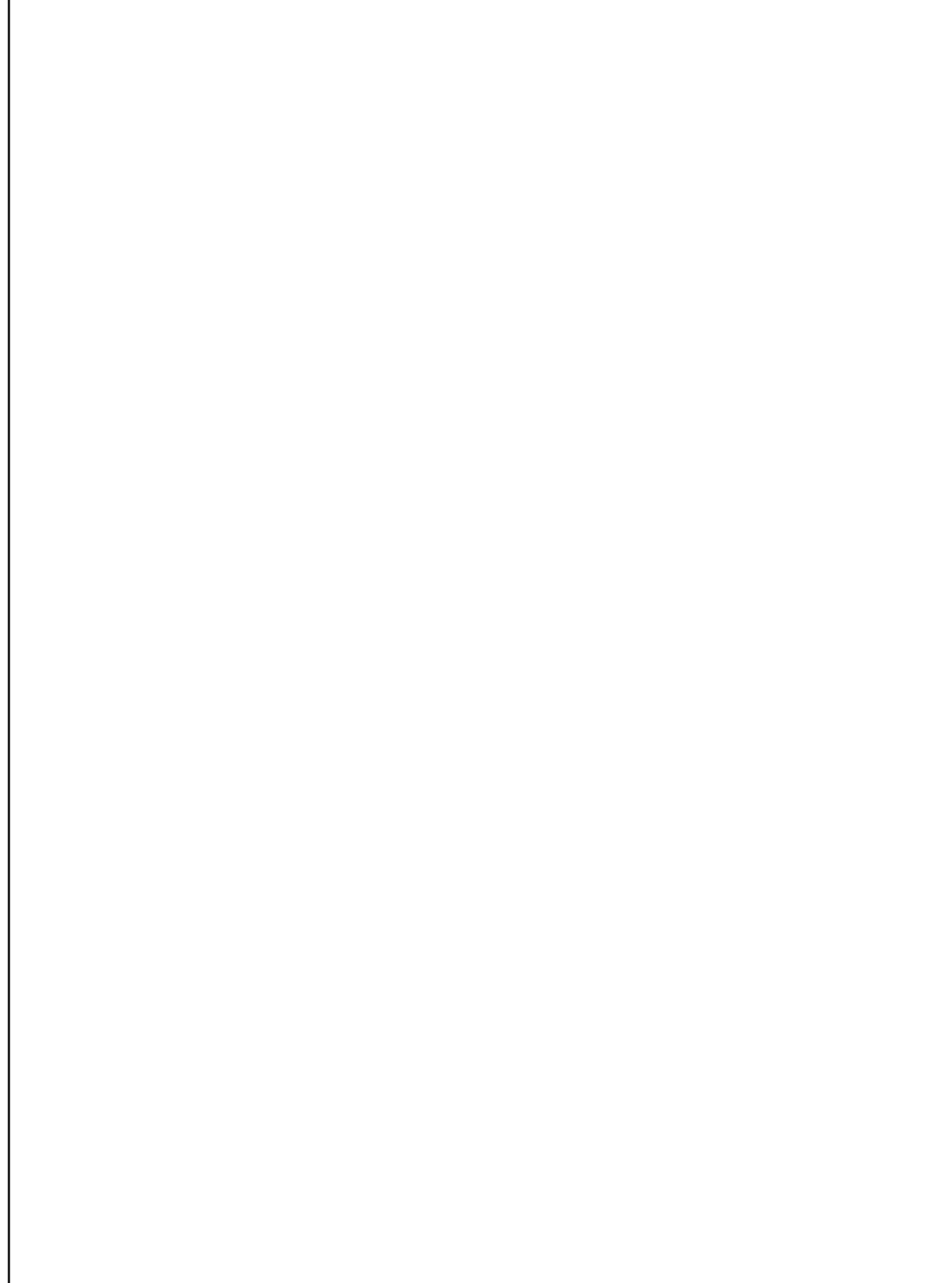


Fig. 14

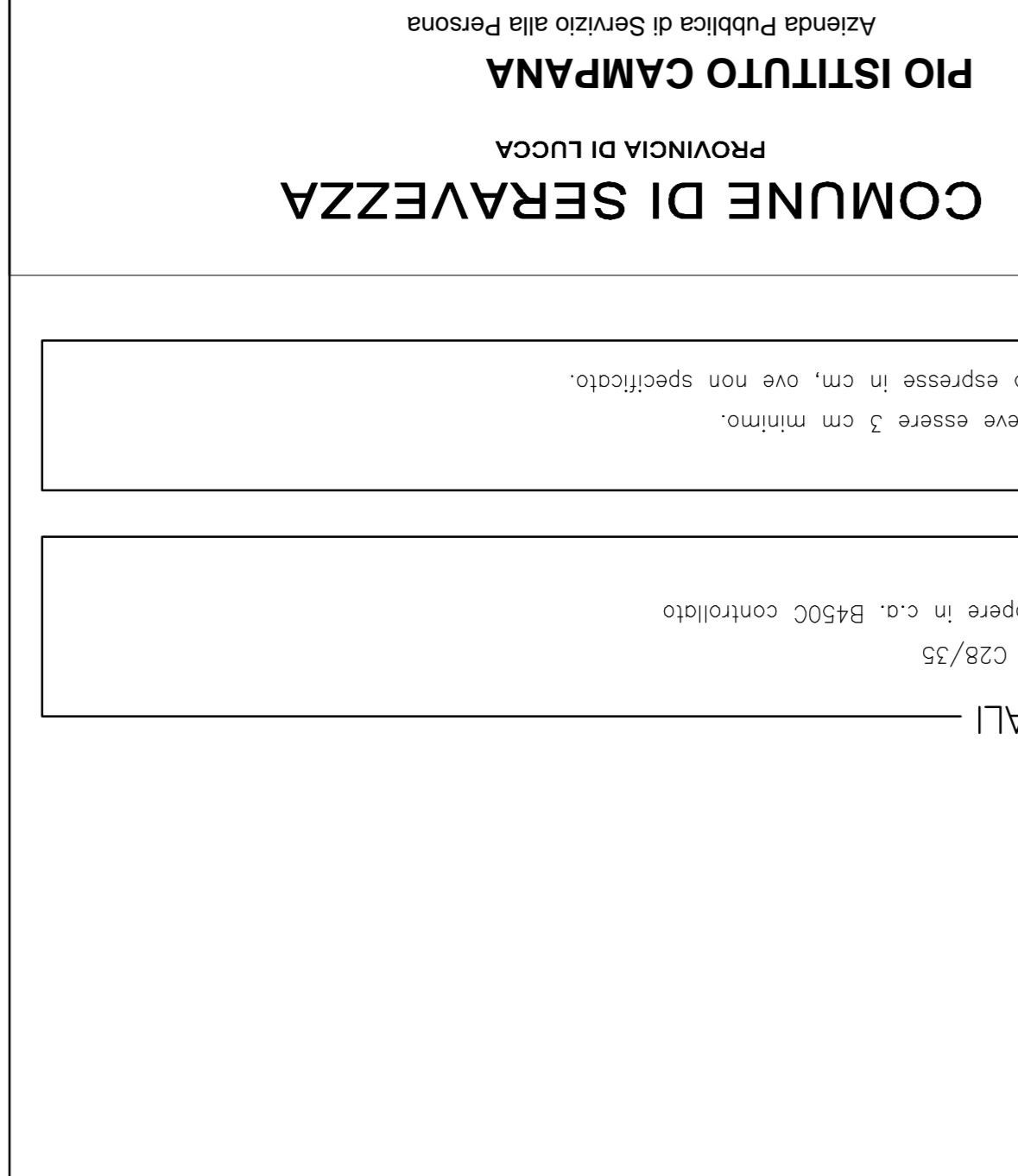


Fig. 13



Fig. 12

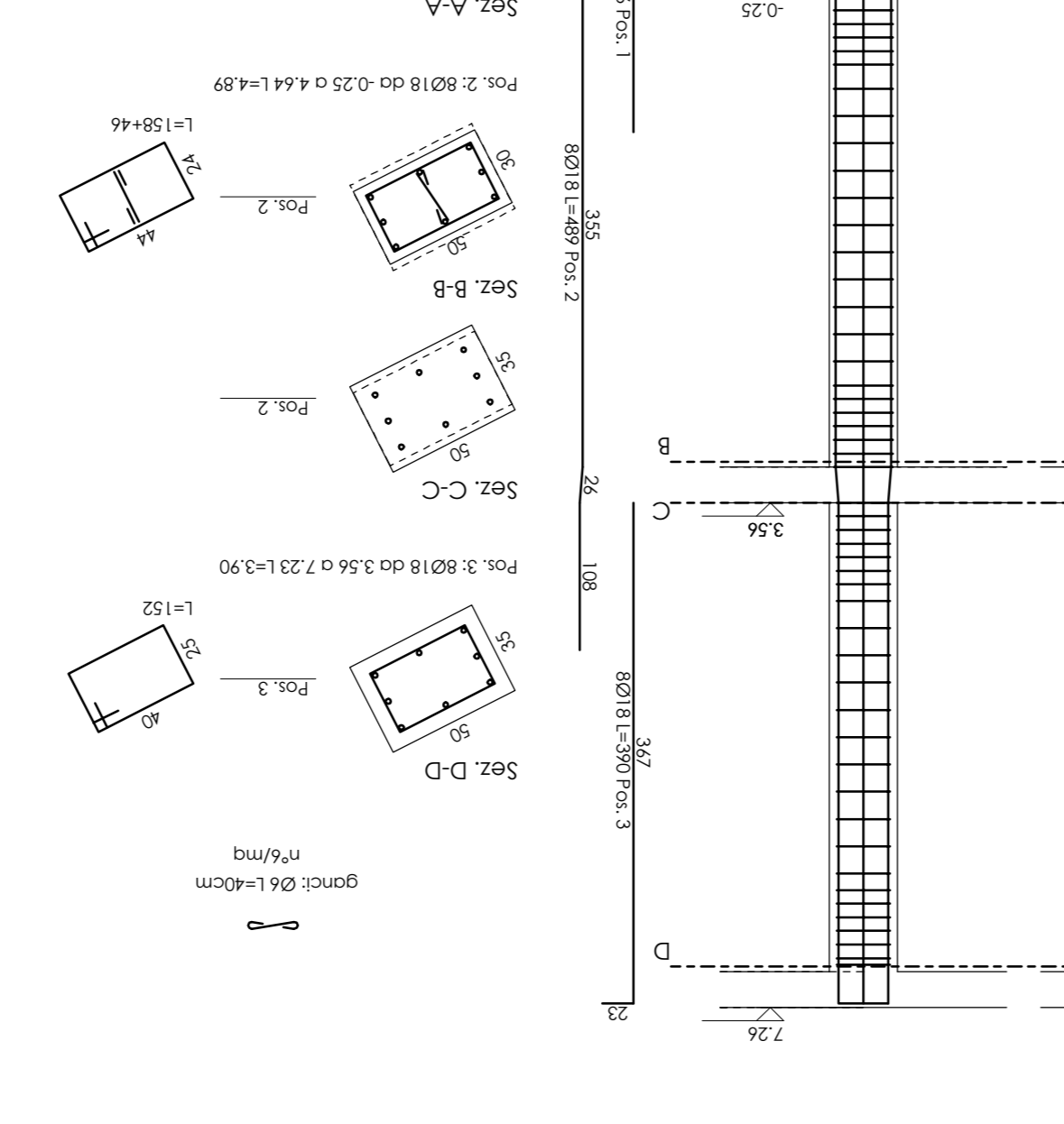


Fig. 11

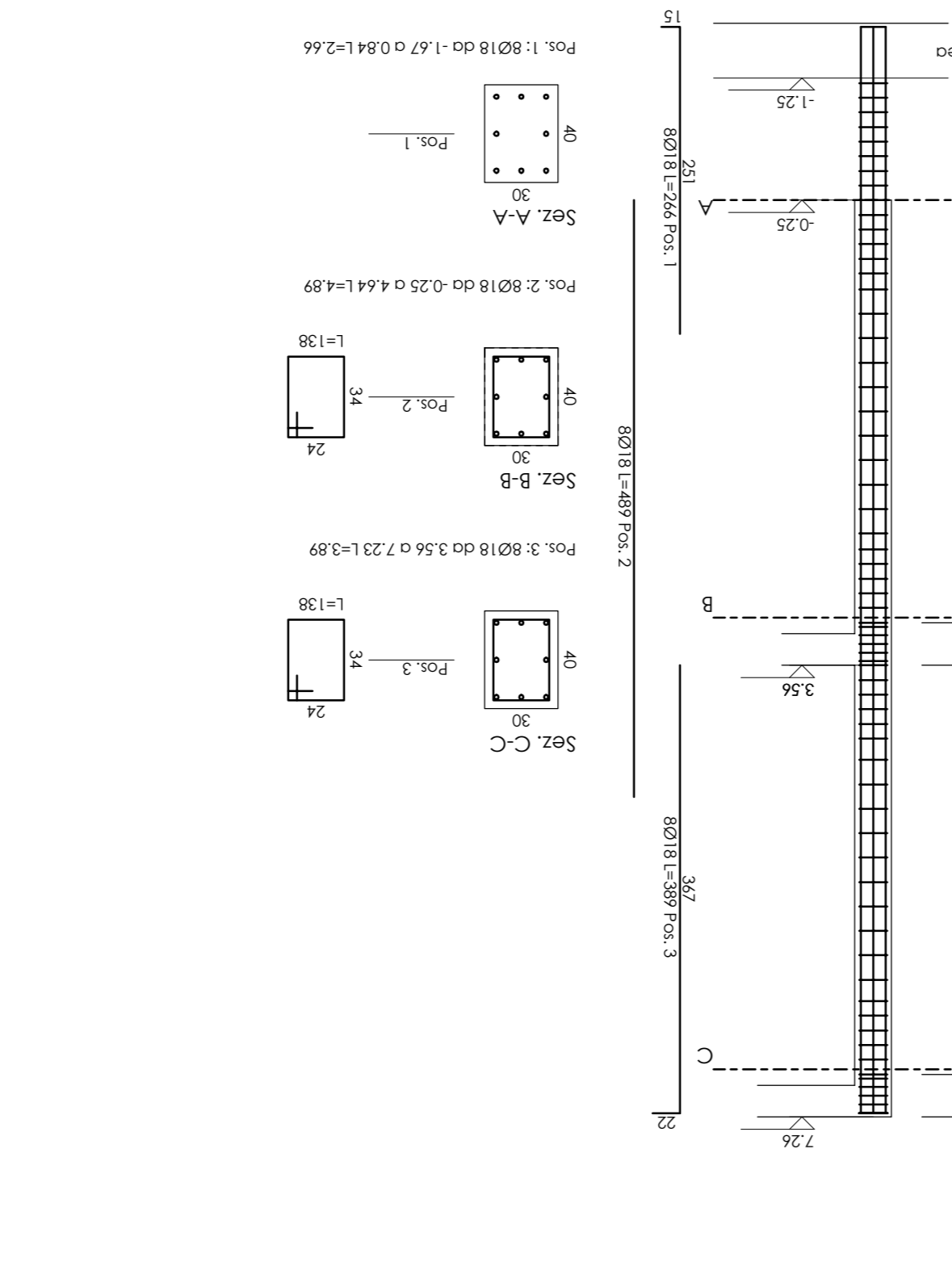


Fig. 10

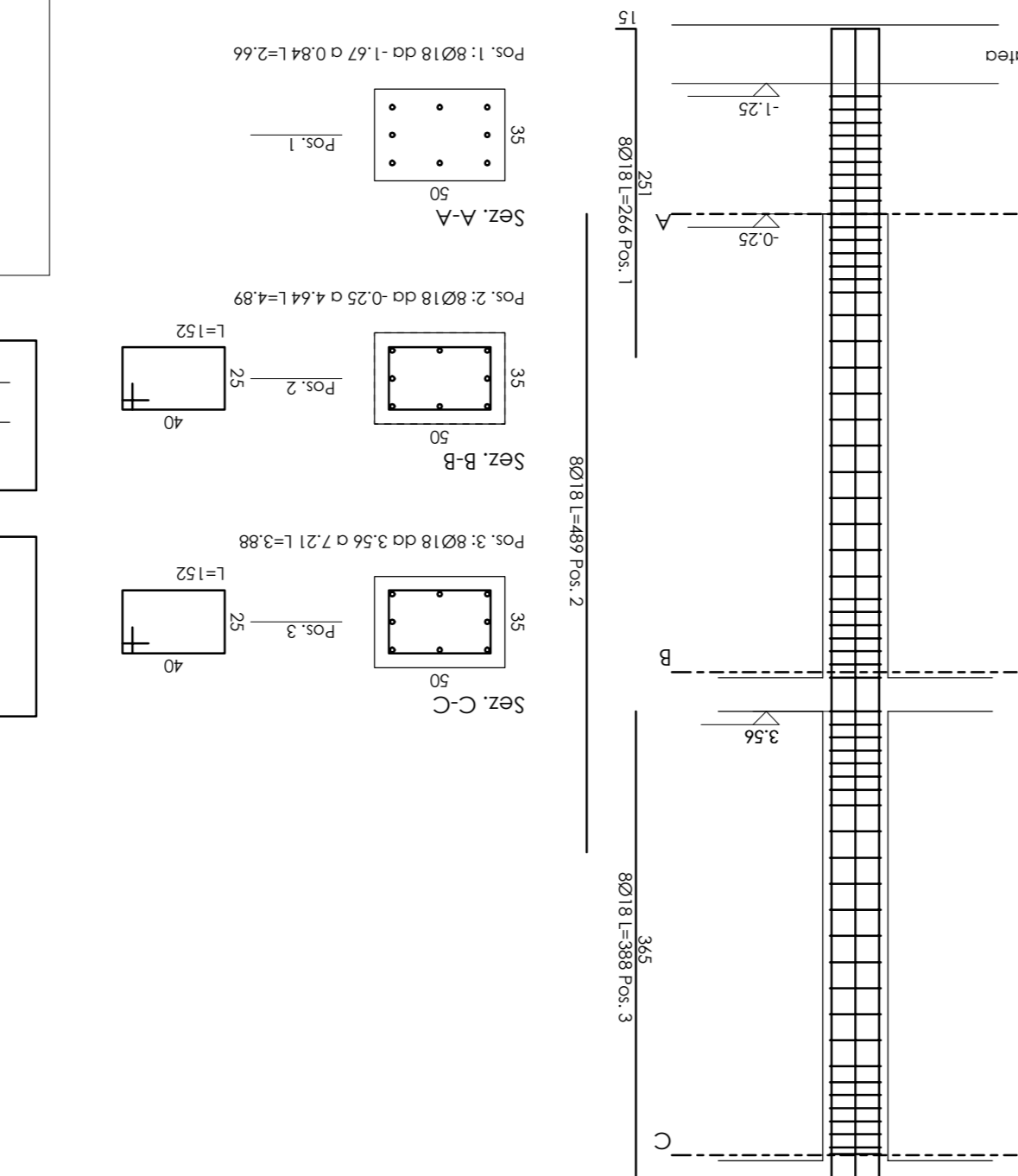


Fig. 9

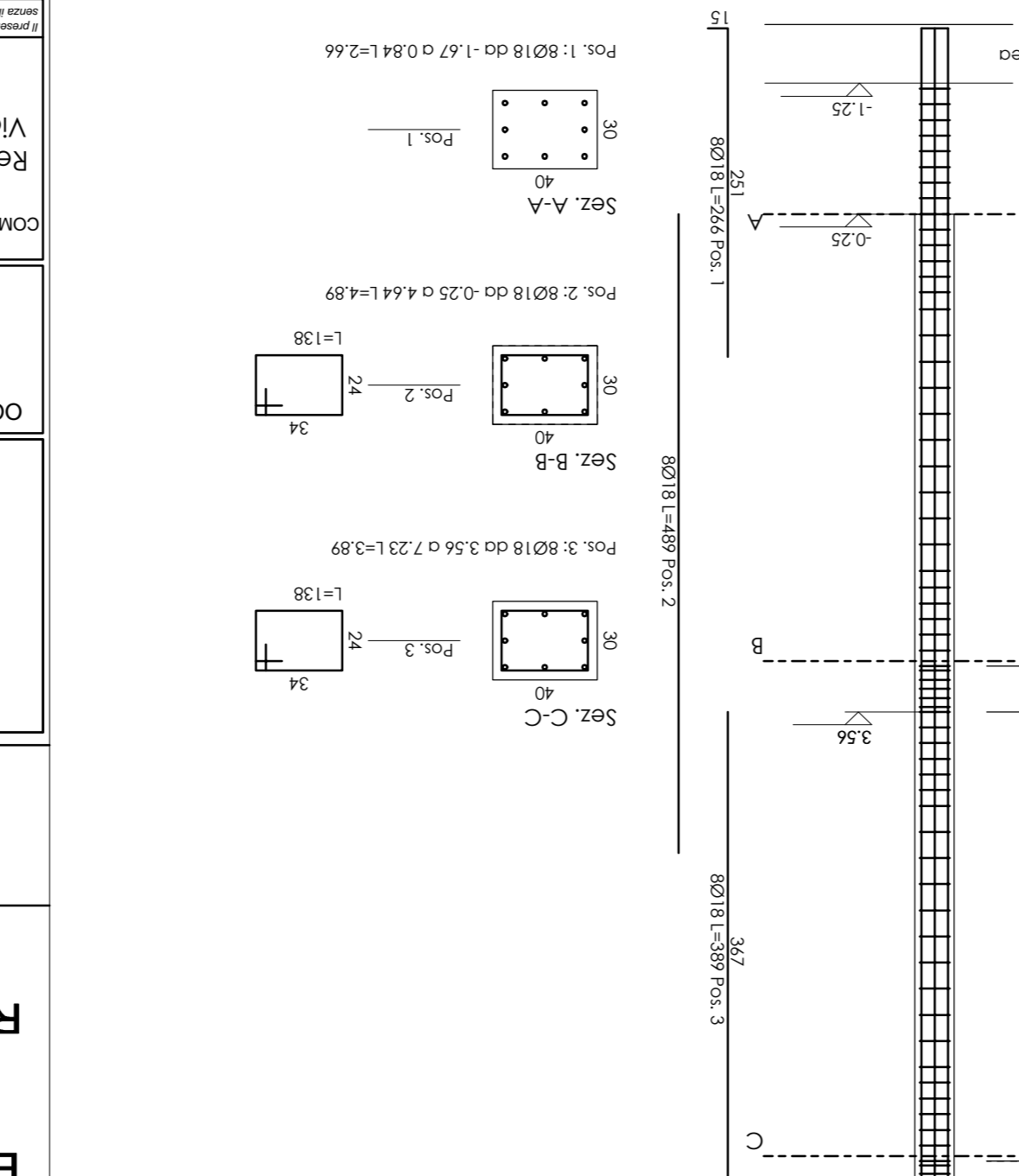


Fig. 8

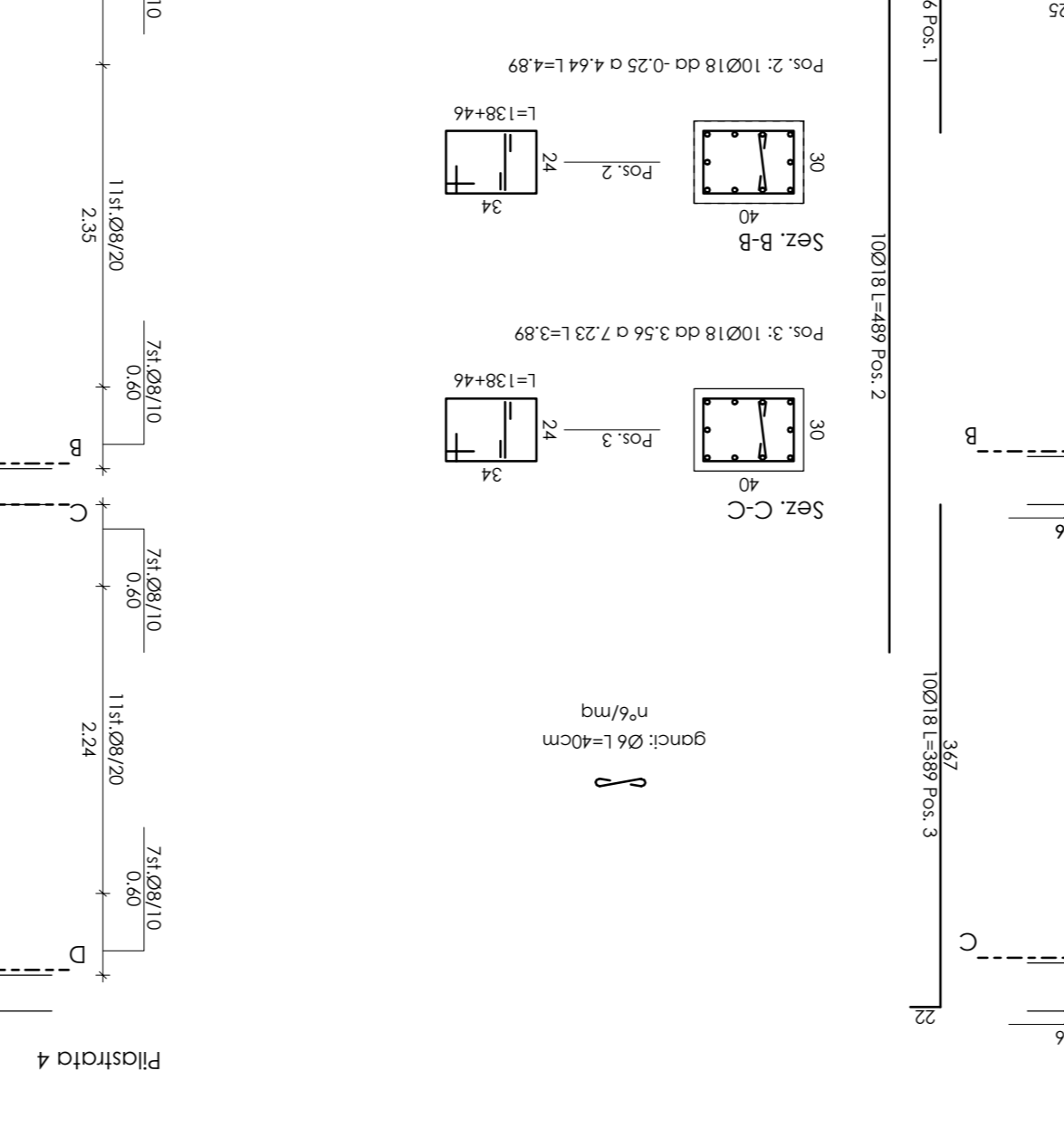


Fig. 7

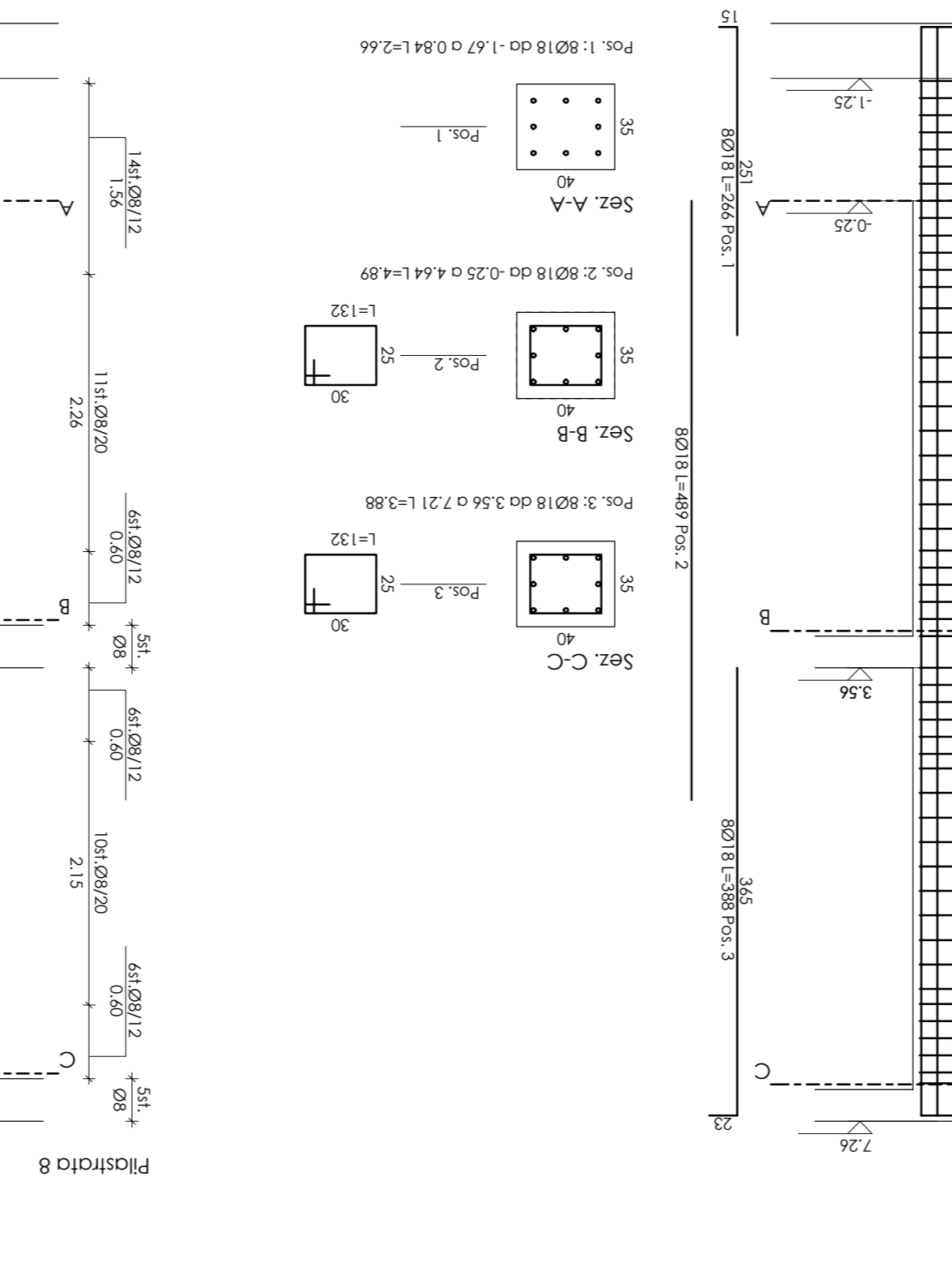


Fig. 6

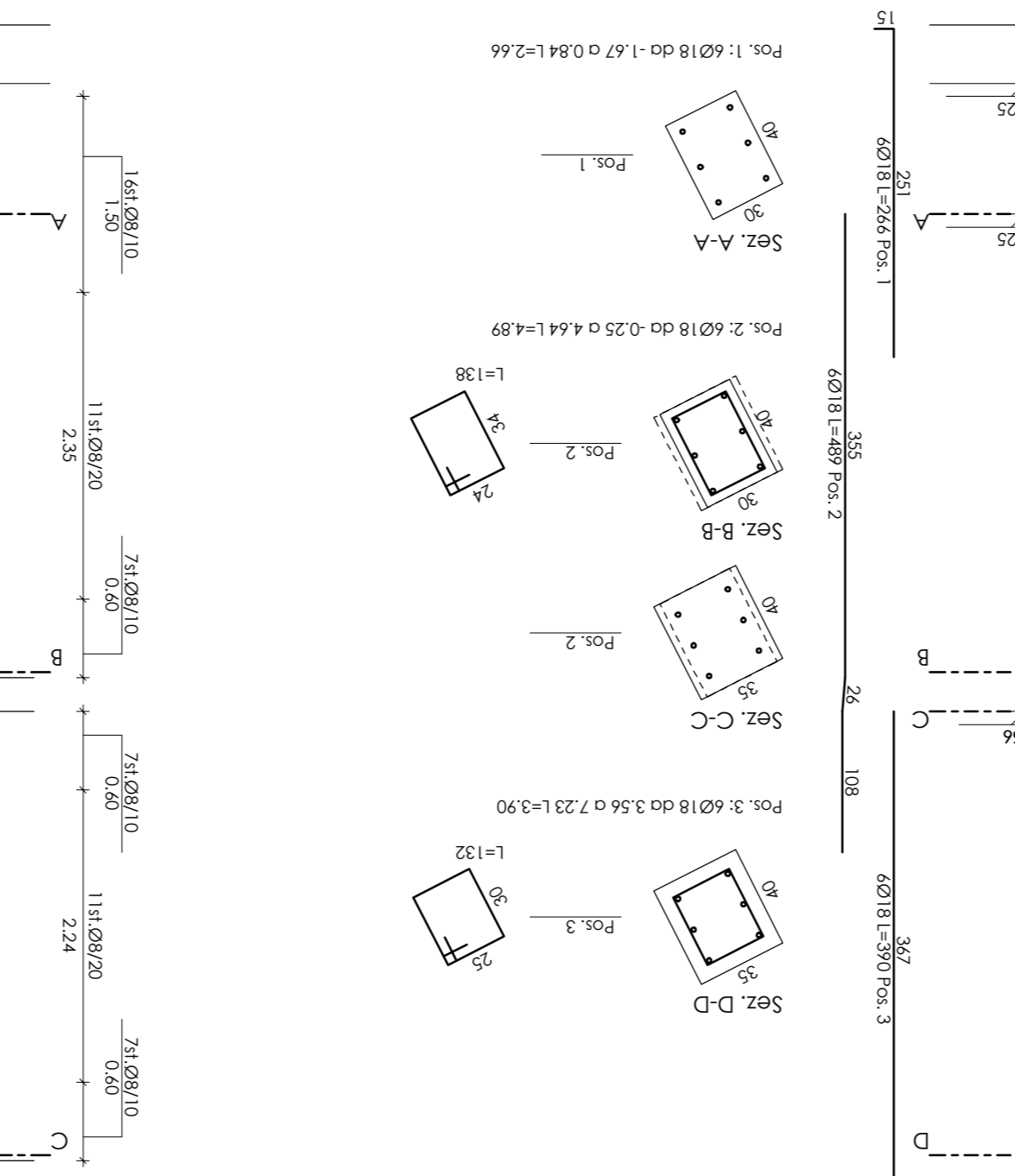


Fig. 5



Fig. 4

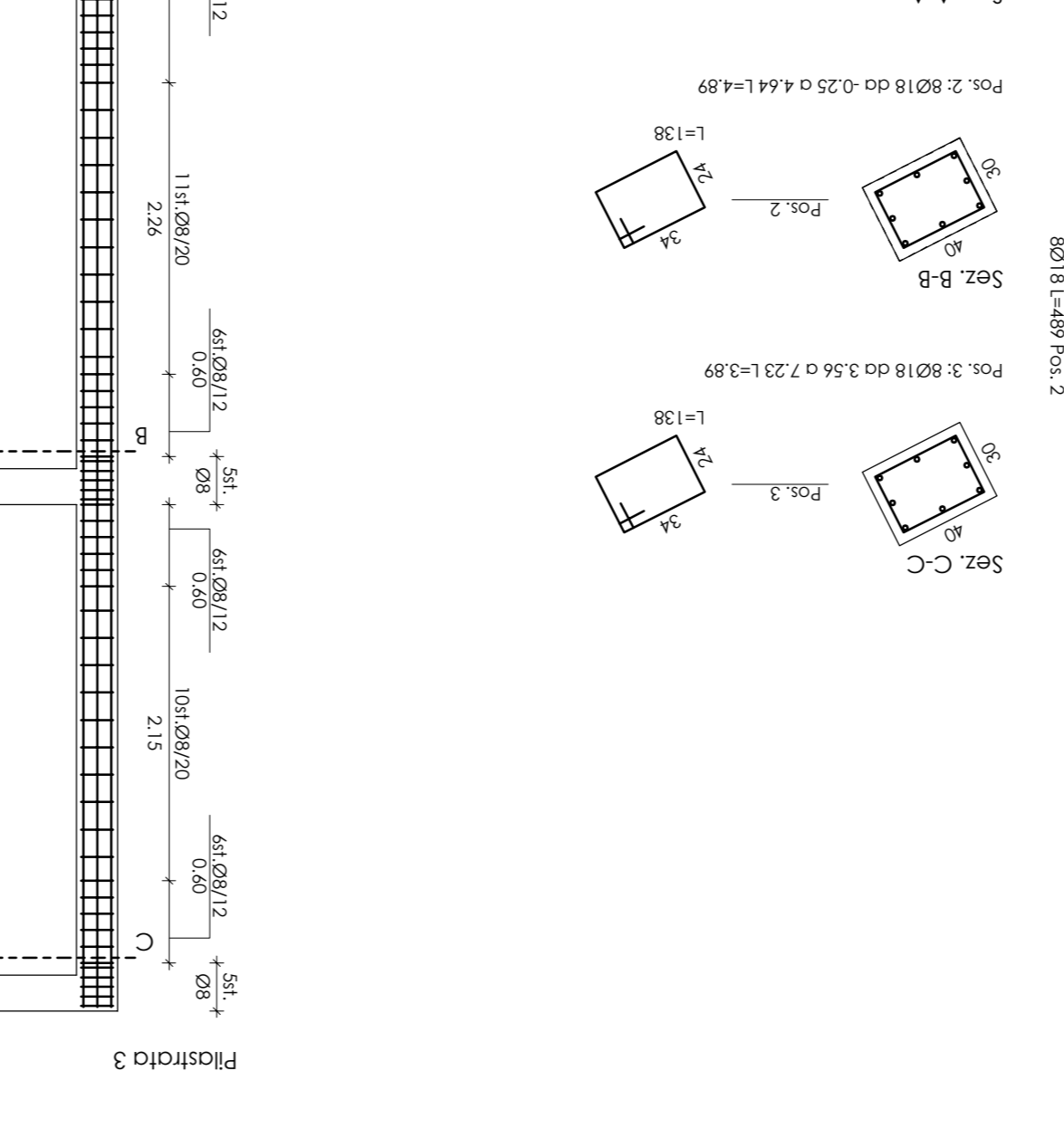


Fig. 3

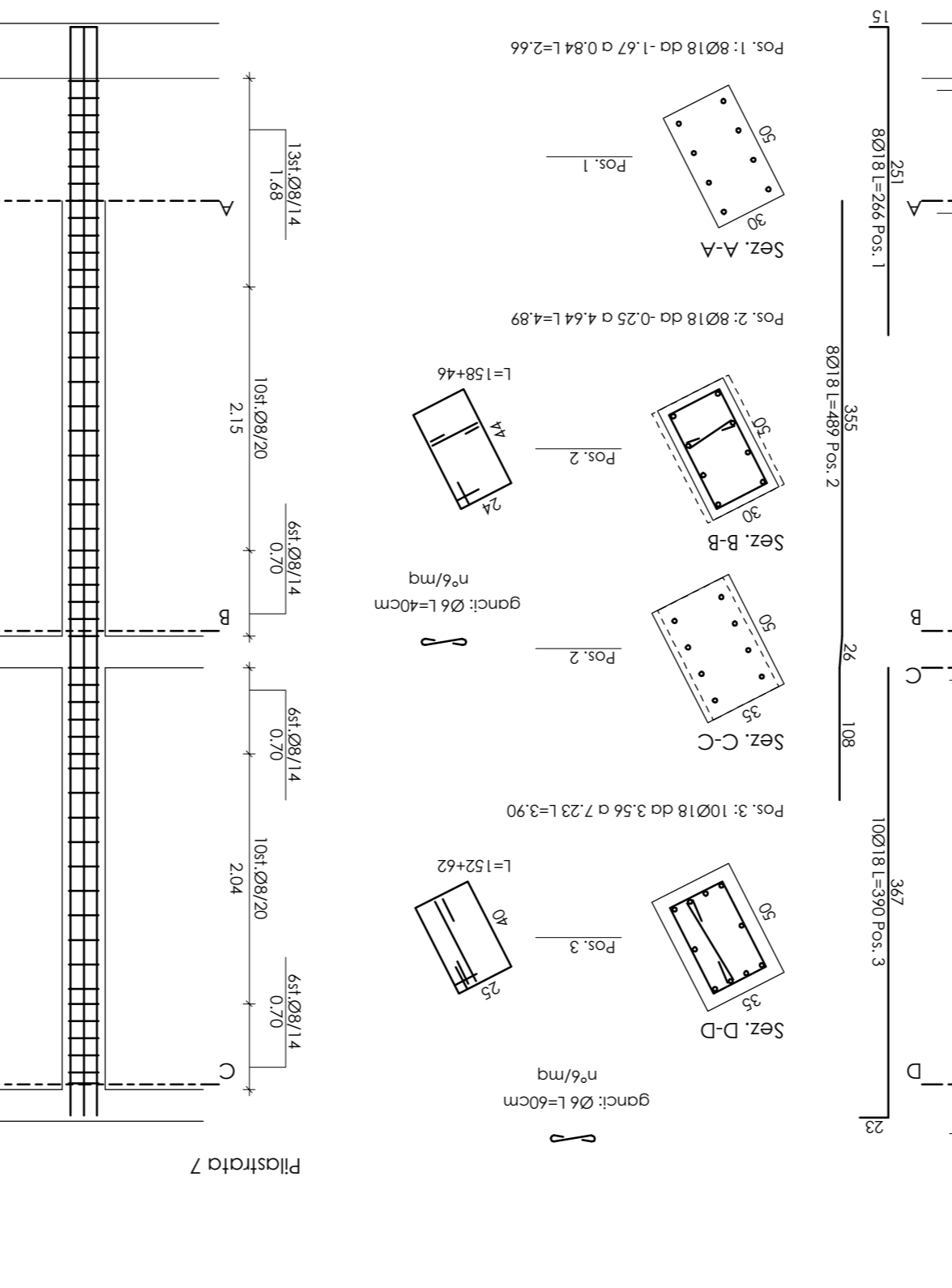


Fig. 2

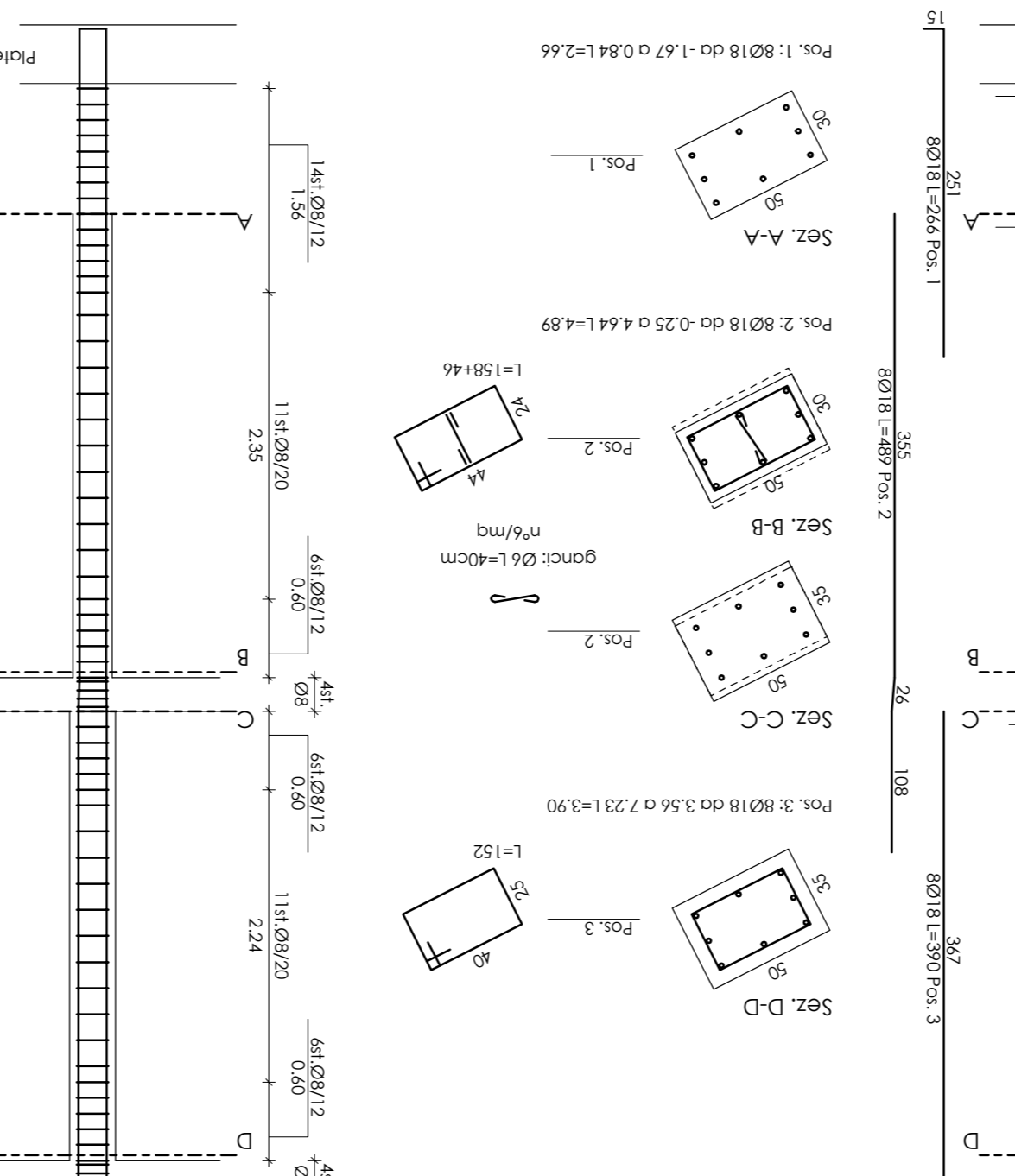


Fig. 1

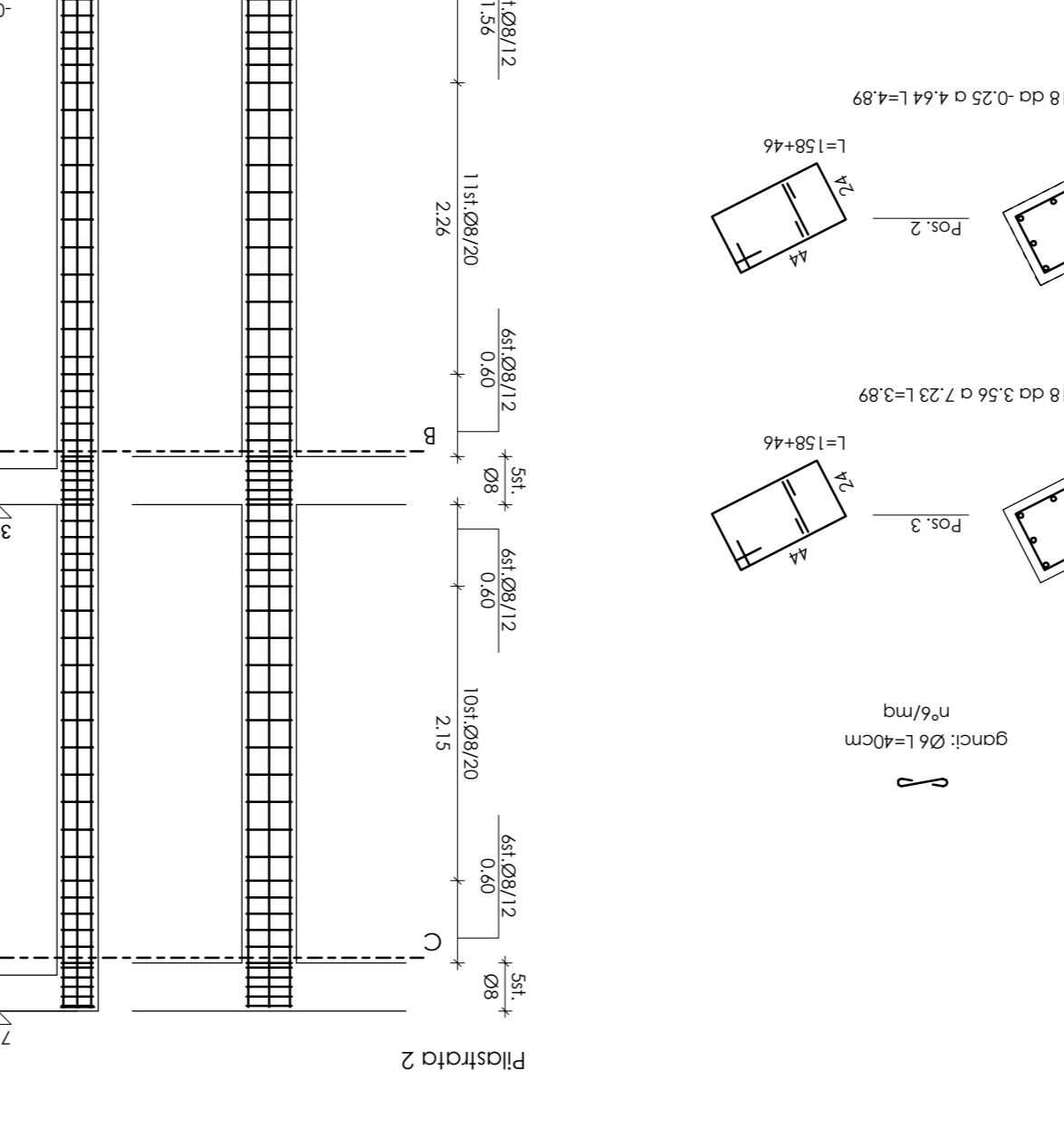


Fig. 16

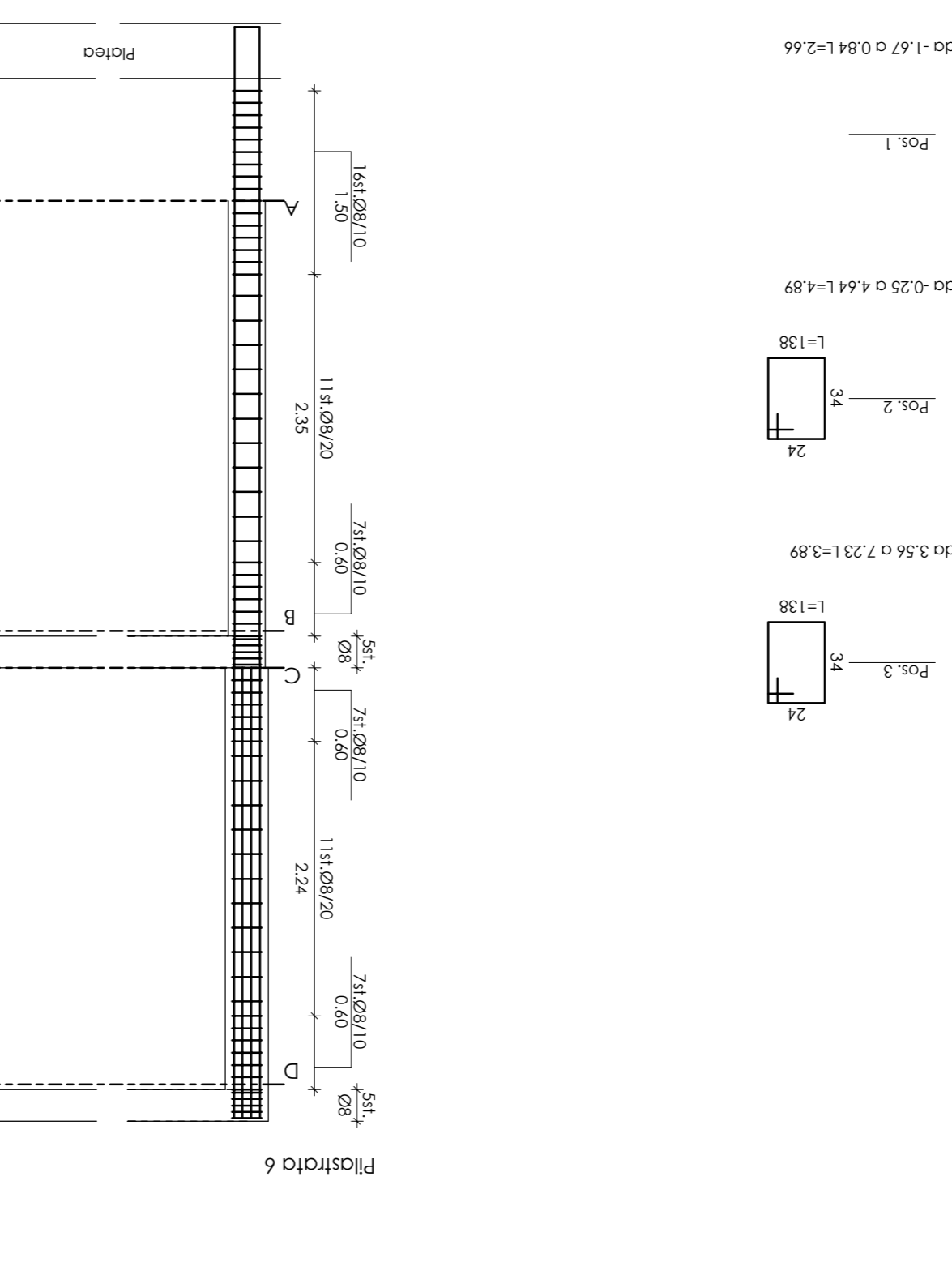


Fig. 15

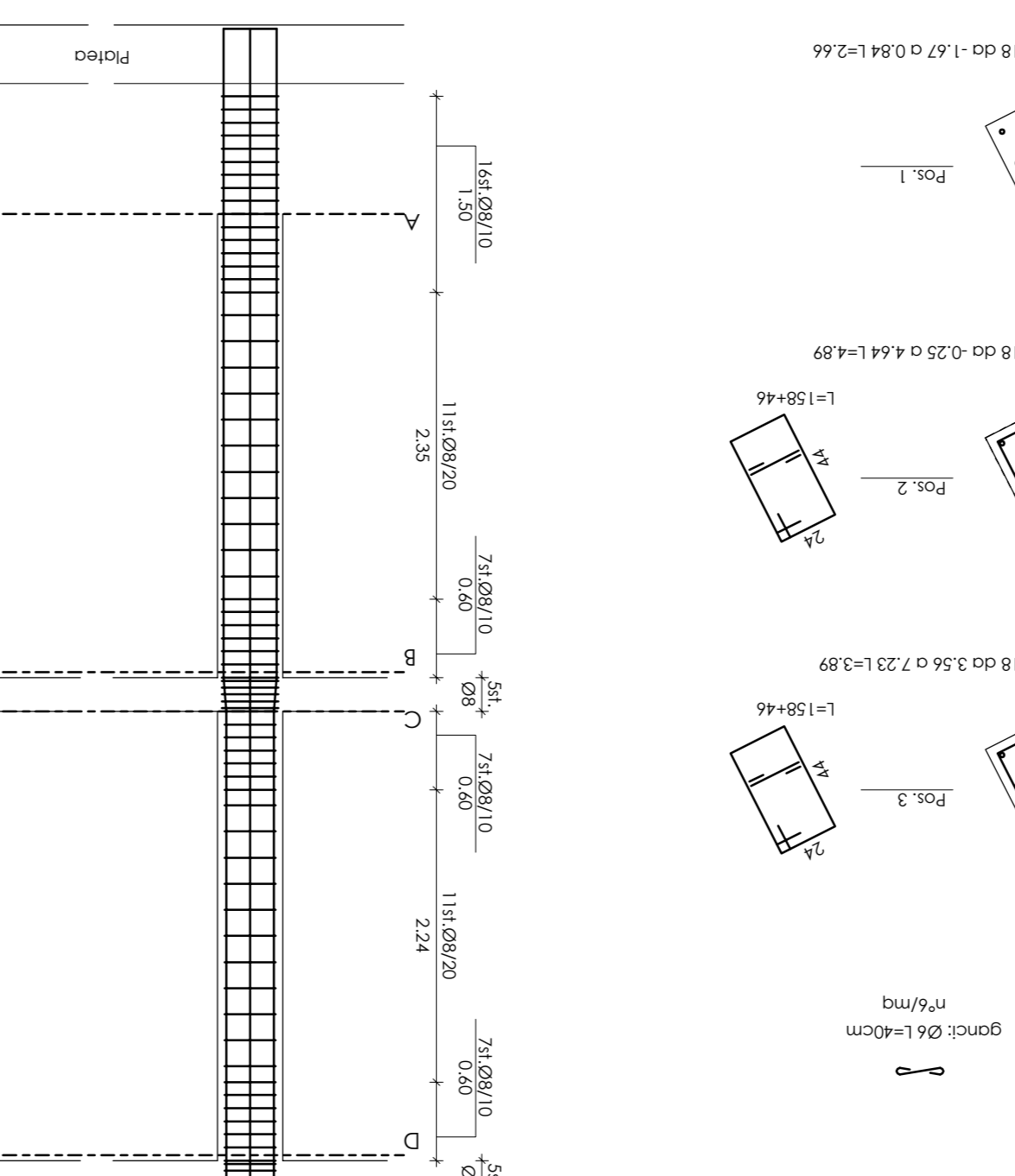


Fig. 14

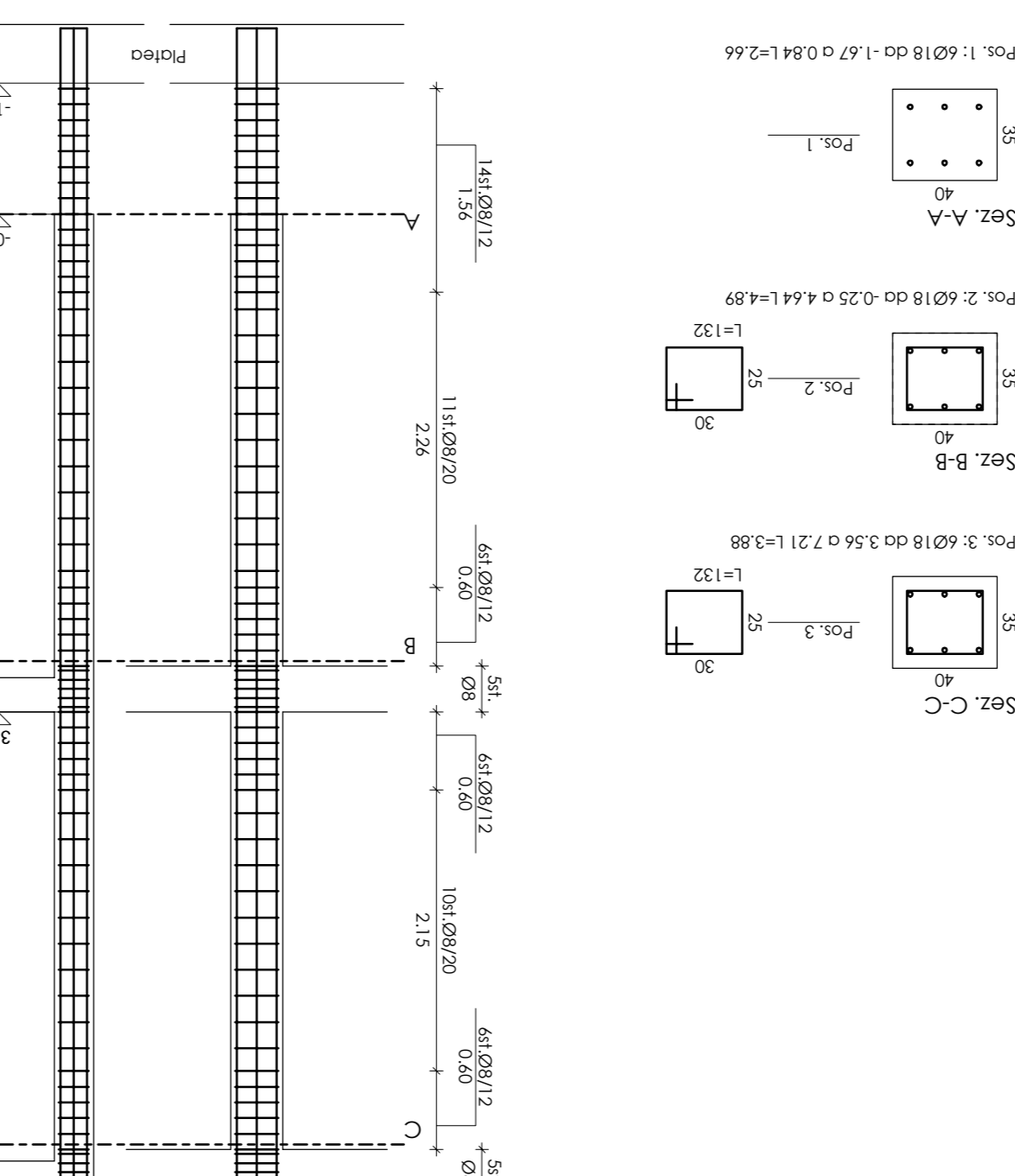


Fig. 13

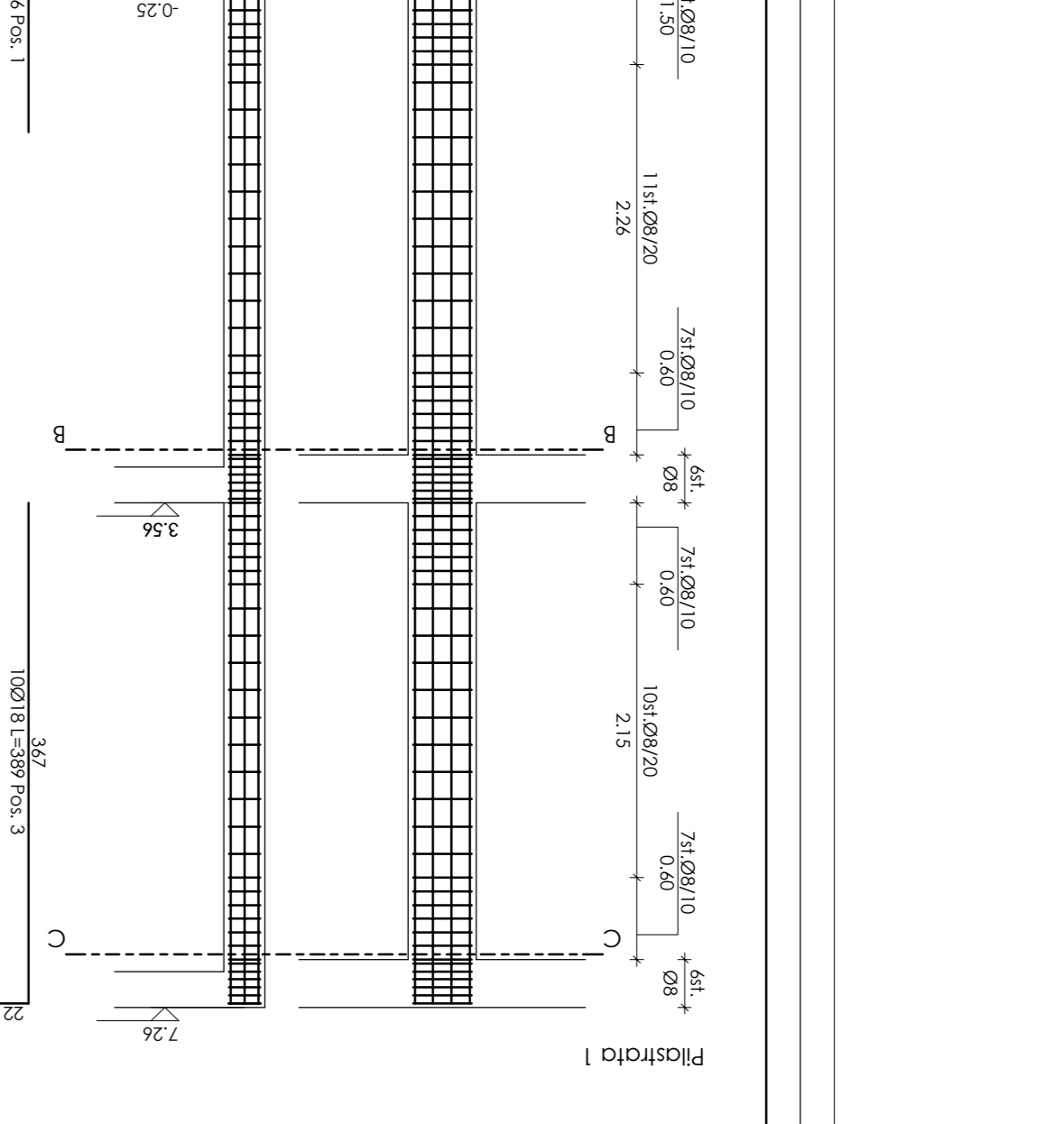


Fig. 12

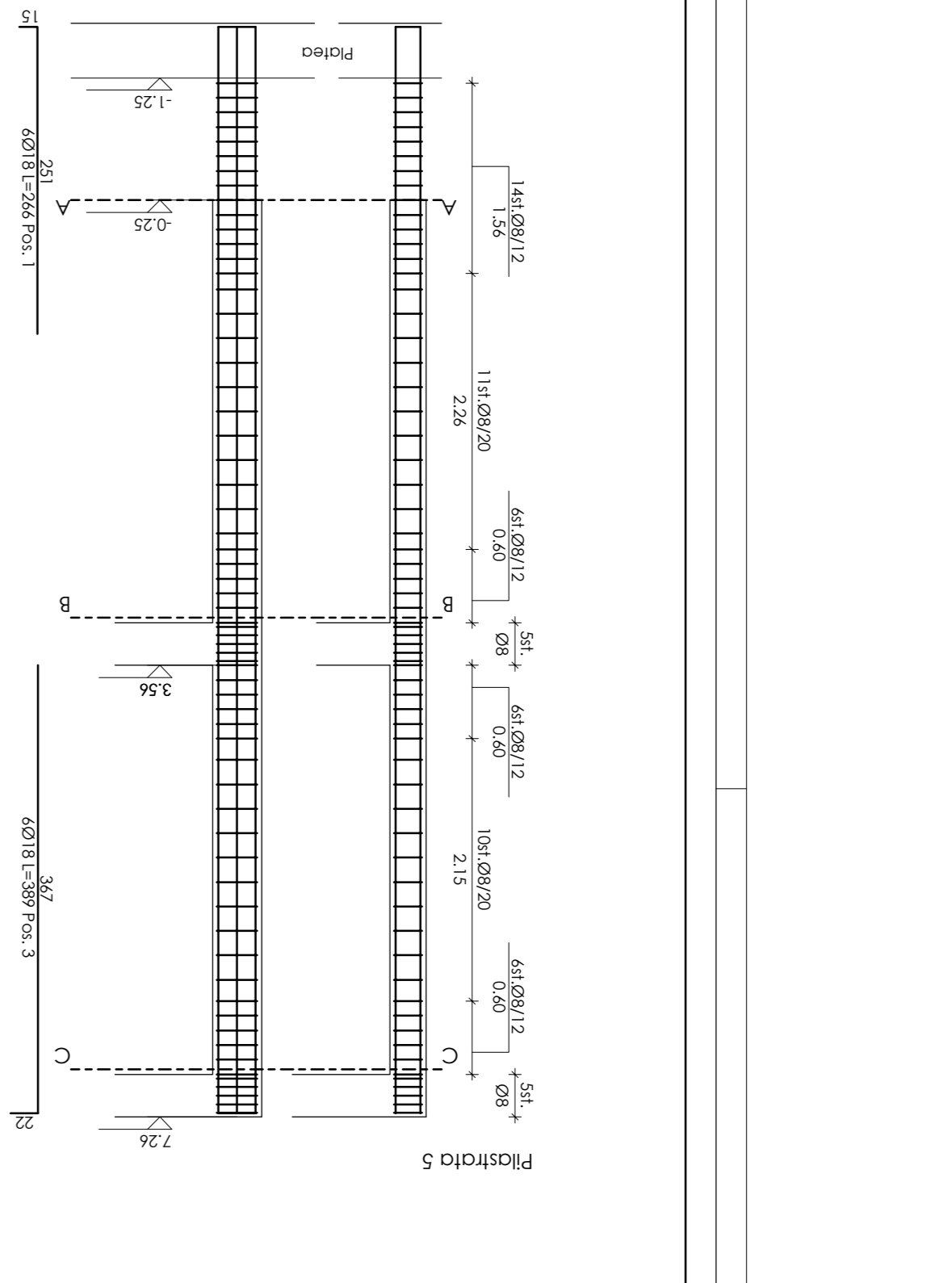


Fig. 11

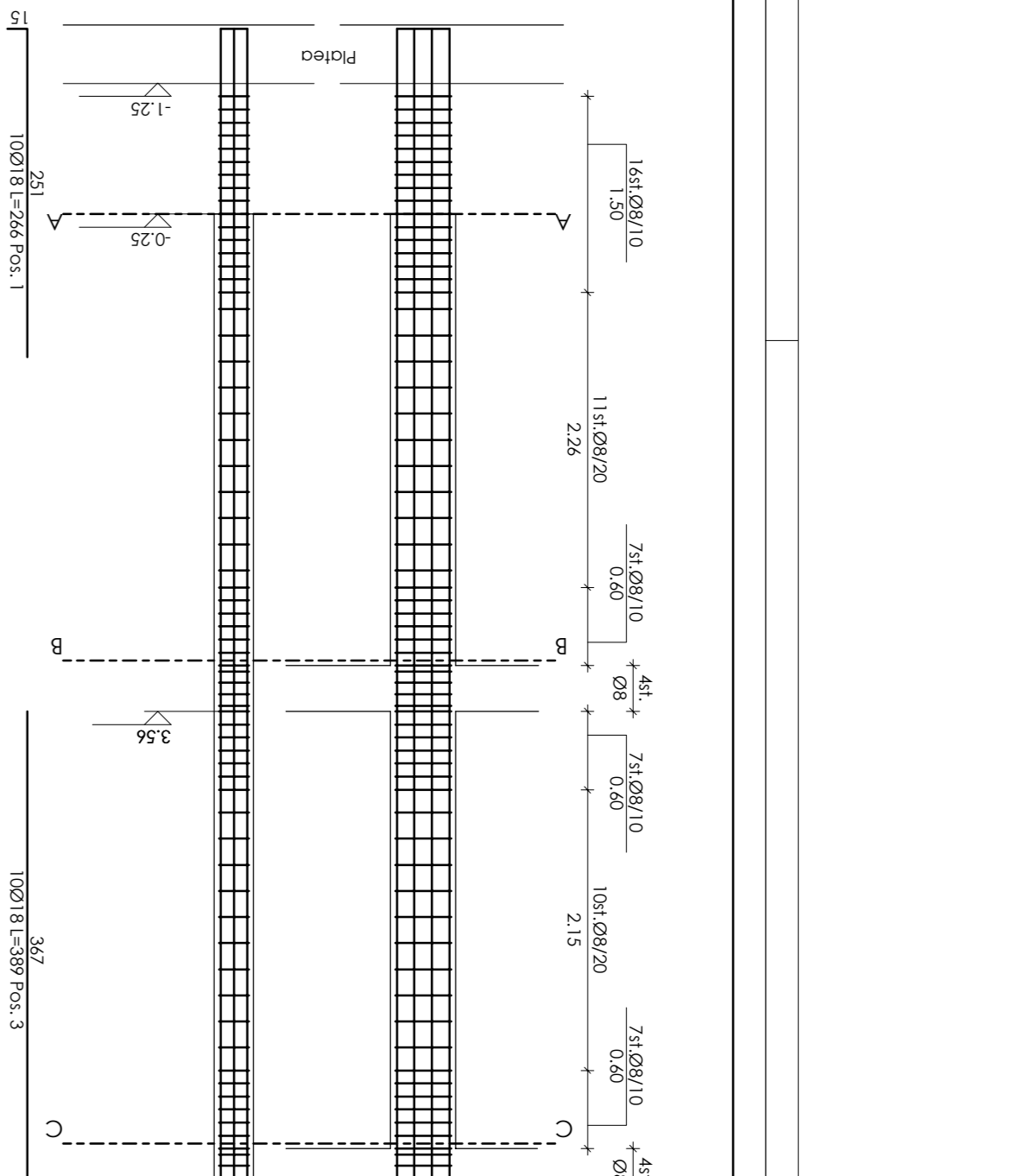


Fig. 10

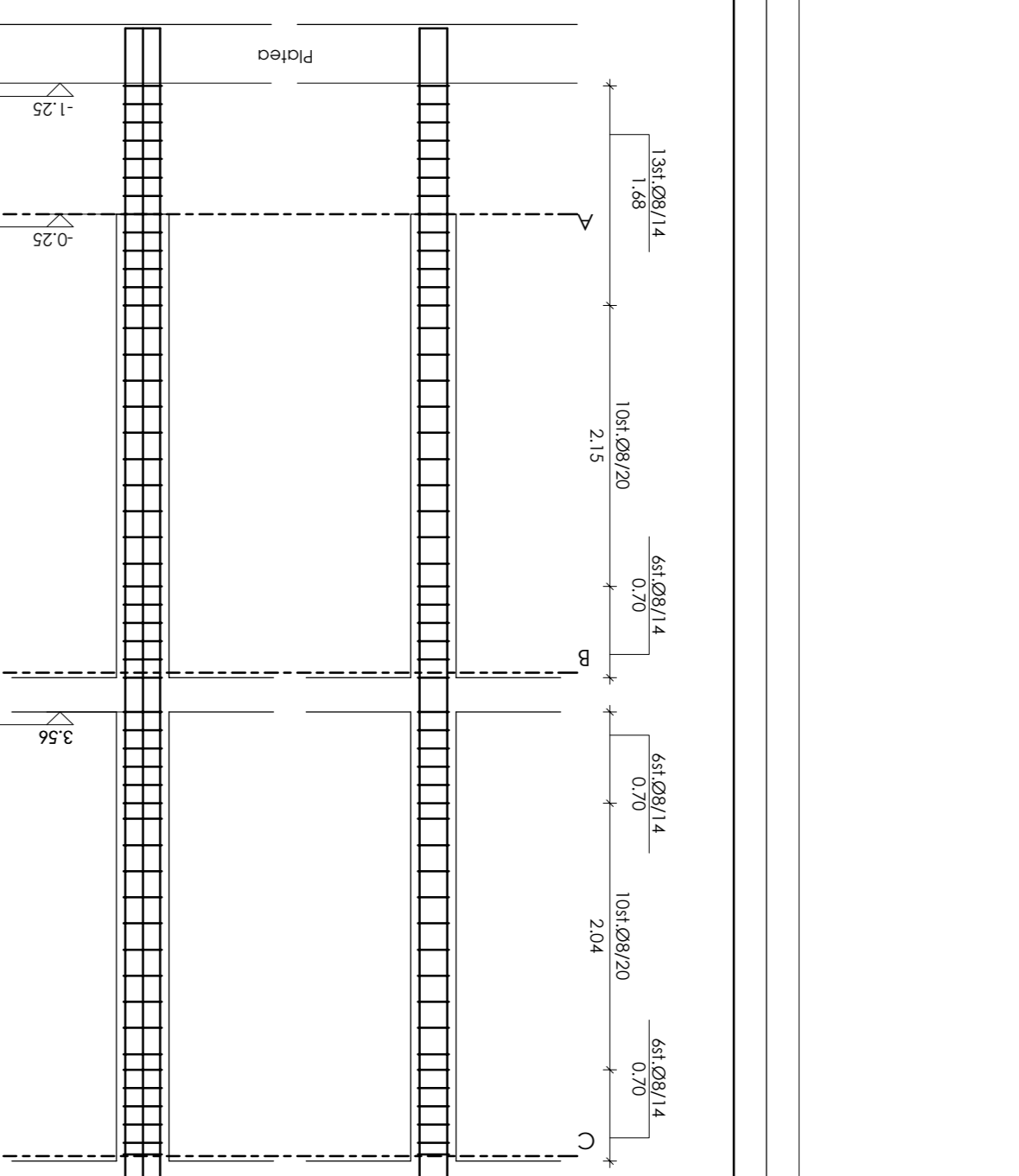


Fig. 9

MATERIALI

- Calcestruzzo: C28/35
- Acciaio per opere in c.a. B450C conformato

NOTE

- Il coprifino deve essere 3 cm minimo.
- Le quote sono espresse in cm, ove non specificato.

COMUNE DI SERAVEZZA
PROVINCIA DI LUCCA
PIU' ISTITUTO CAMPANA
 Azienda Pubblica di Servizi alla Persona

RIORGANIZZAZIONE DEGLI SPAZI INTERNI ED
ESTERNI DEL FABBRICATO ADIACENTE ALLA RSA
CON CONTENESTRUMENTO ALLA RSA
REALIZZAZIONE DEL NUOVO NUCLEO ALZHEIMER
- 1° LOTTO -
ELABORATI GRAFICI STRUTTURALI

OGGETTO
 PLASTATE
 Scala 1:25

COMITENTE
 Residenza Scalo Sorbino Pio Hilvio Campano (LU)
 Via F. Donati n. 100/116 55047 Seravezza (LU)

PROGETTISTA
 Ing. Riccardo Felicioni - Arch. Giacomo Bocci - Ing. Alberto Del Corno - Ing. Stefano Nodotti
 Raggruppamento Temporaneo di Professionisti

2/15