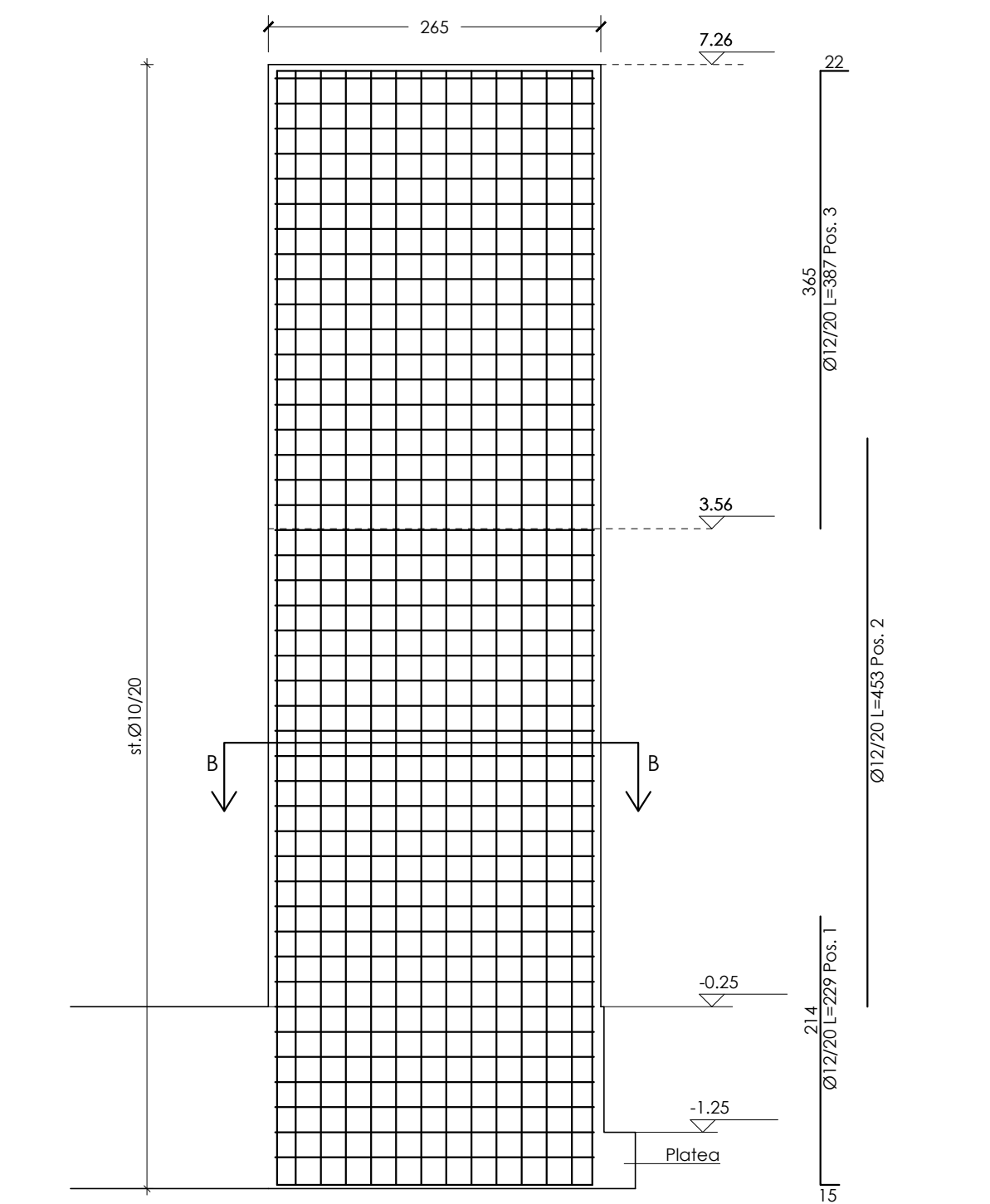
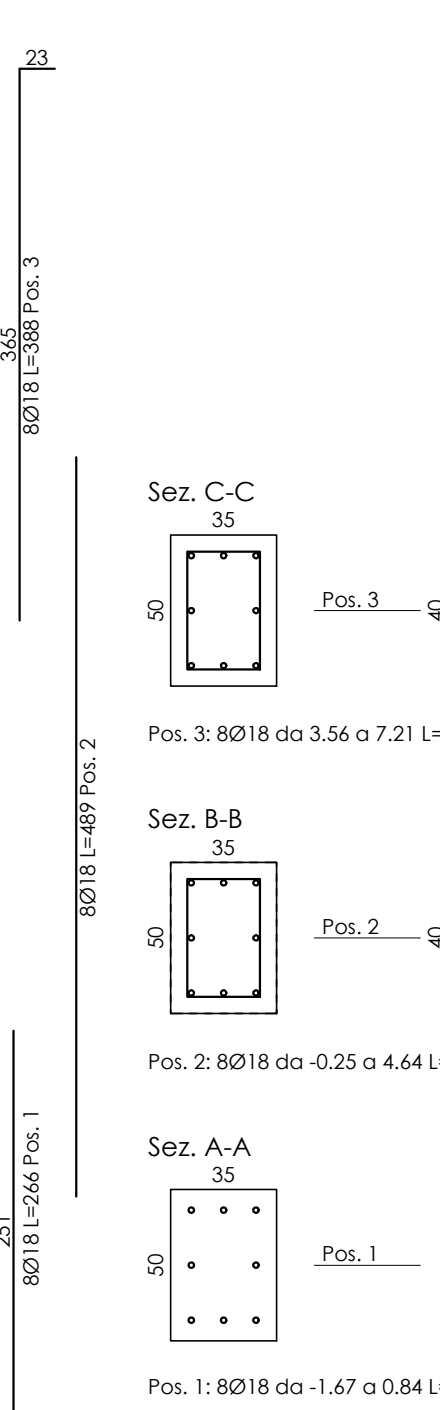
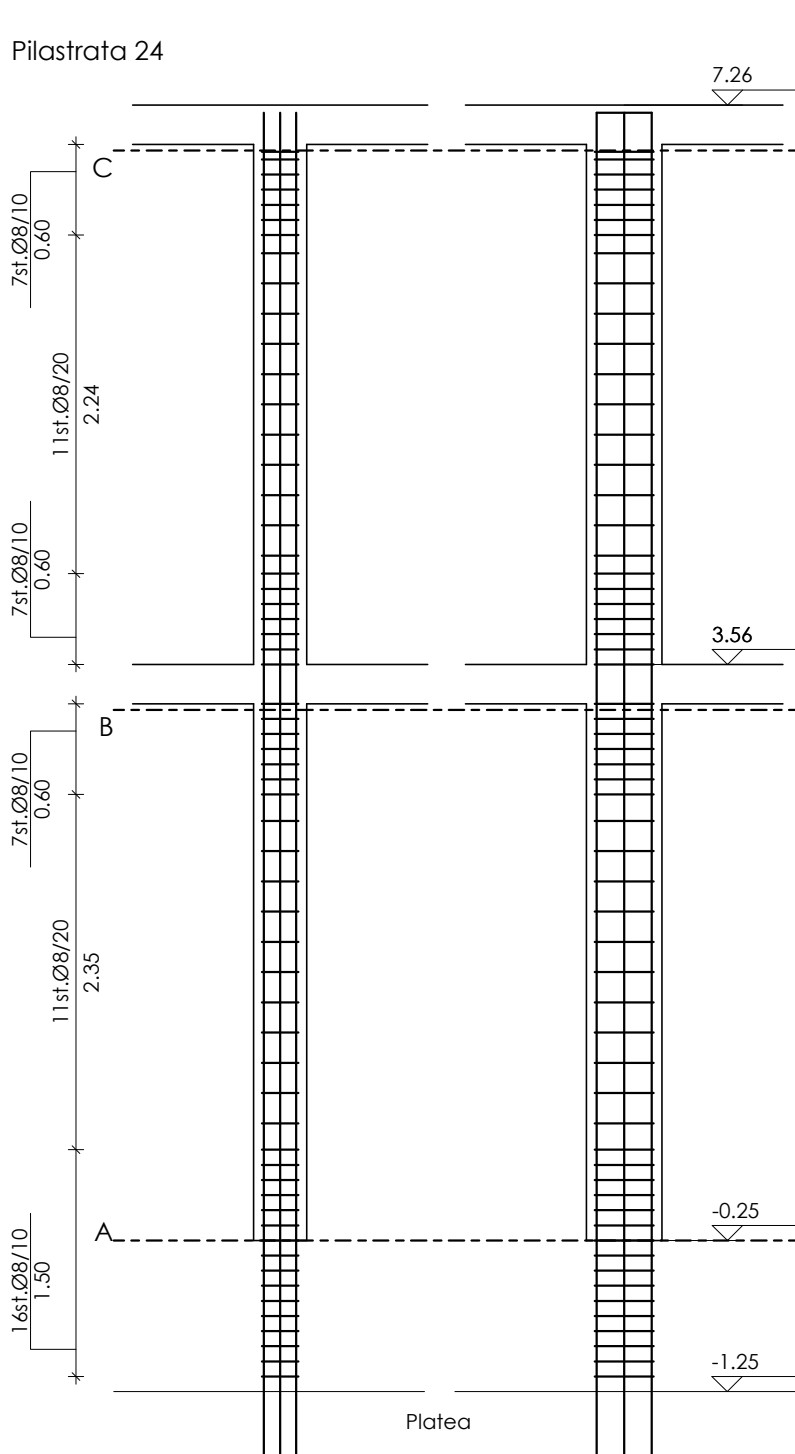
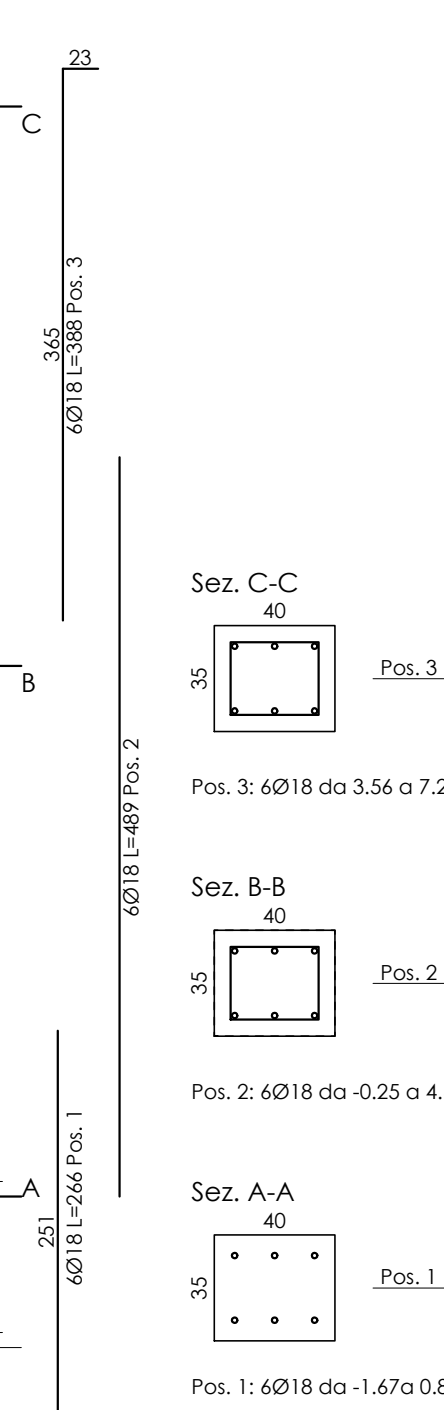
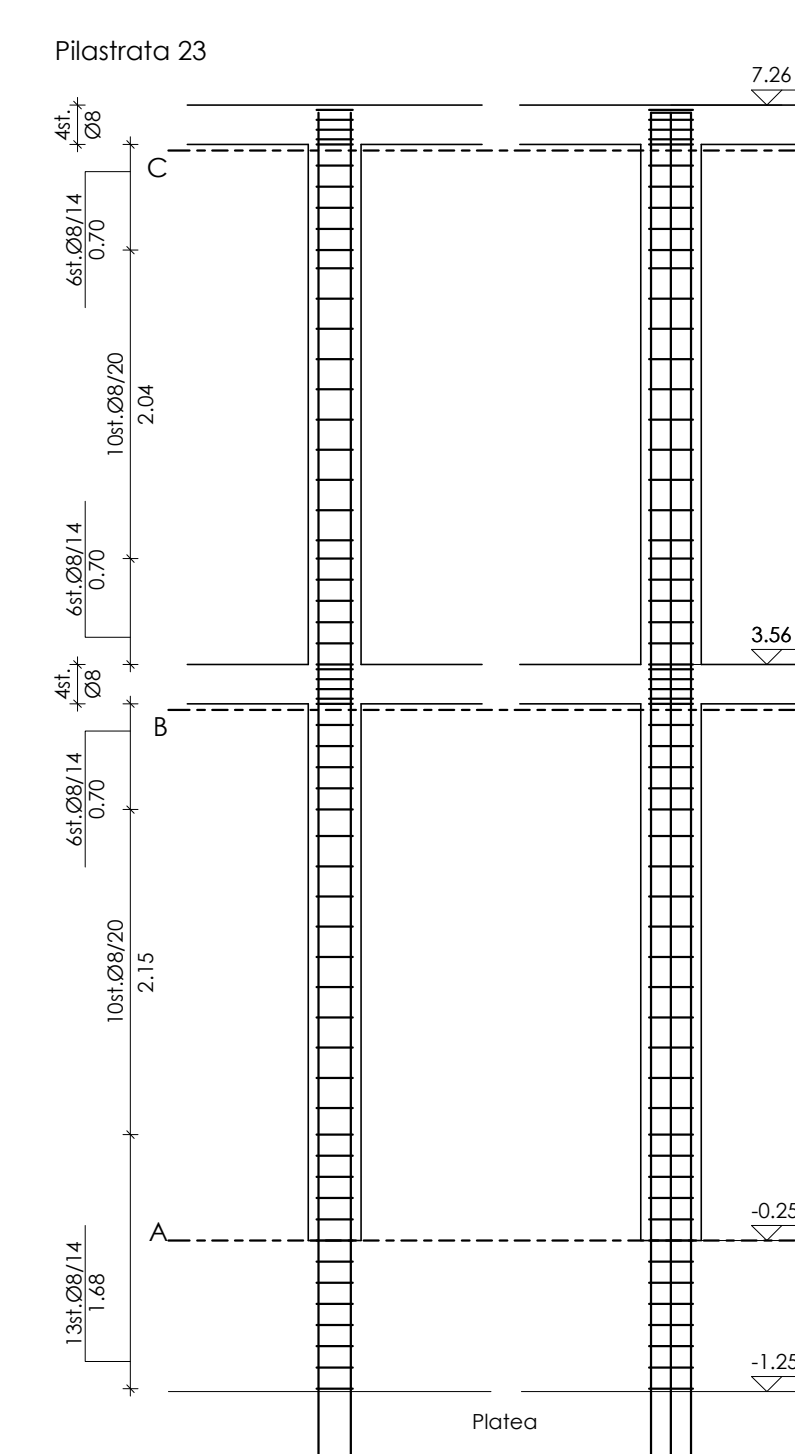
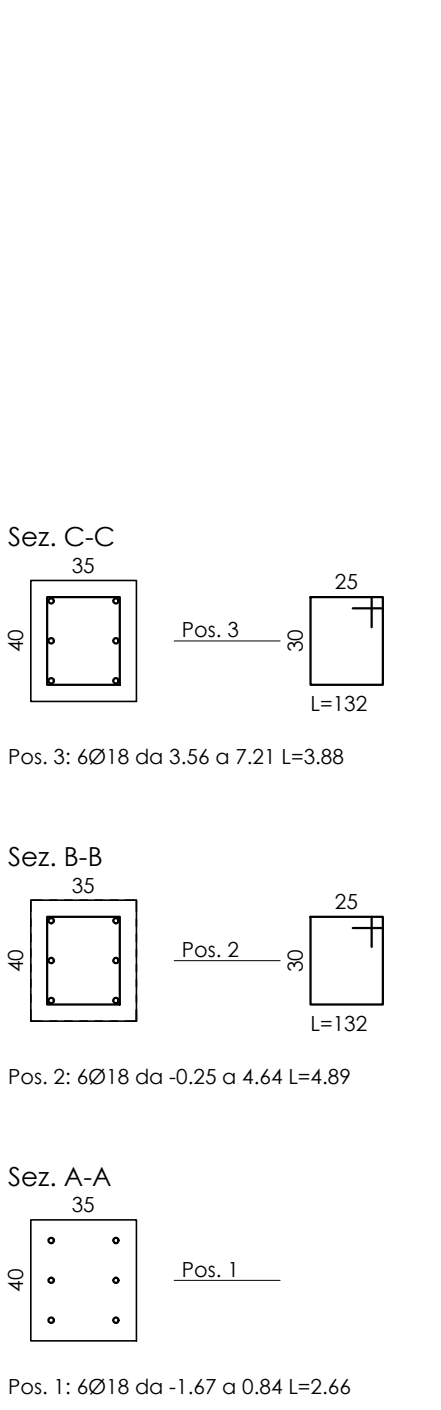
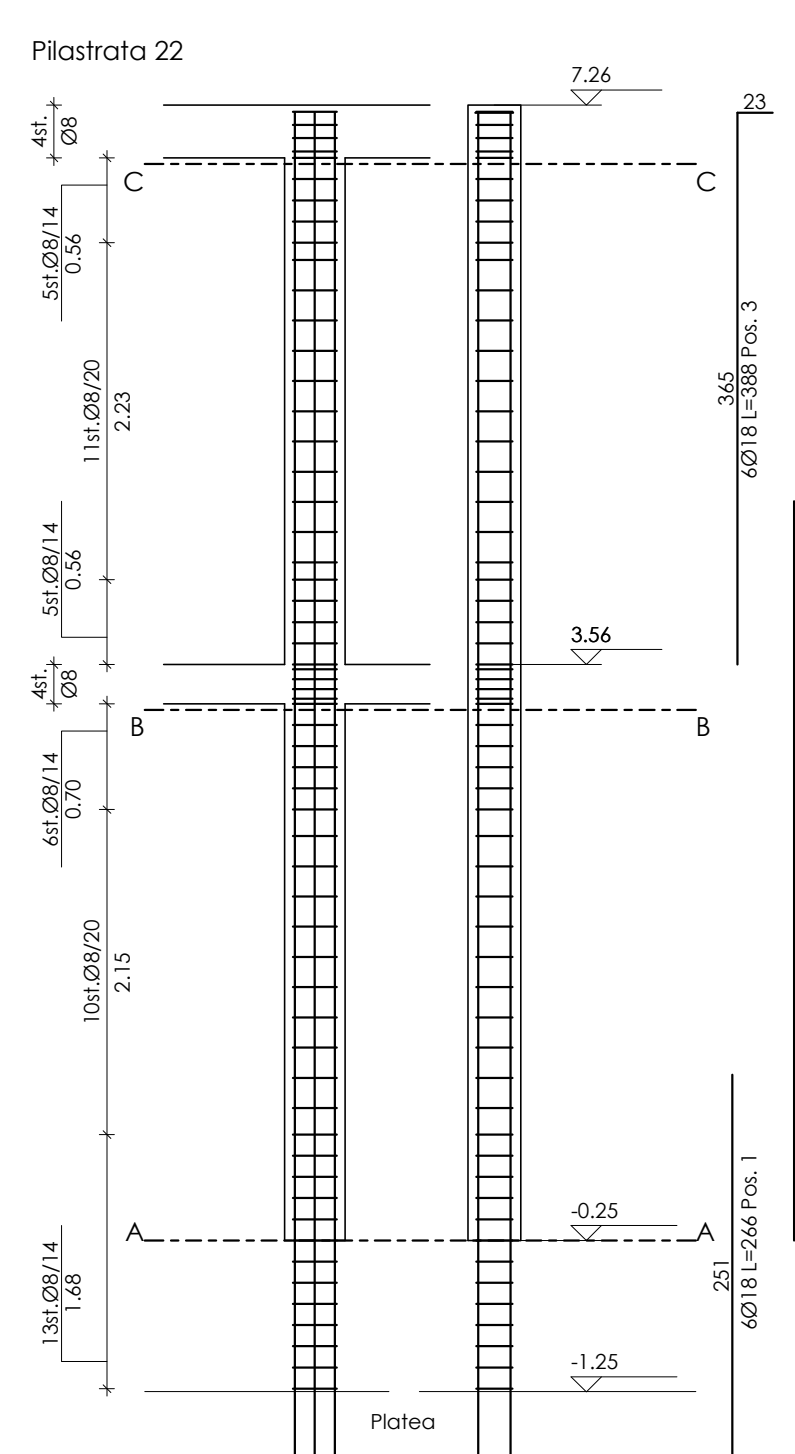
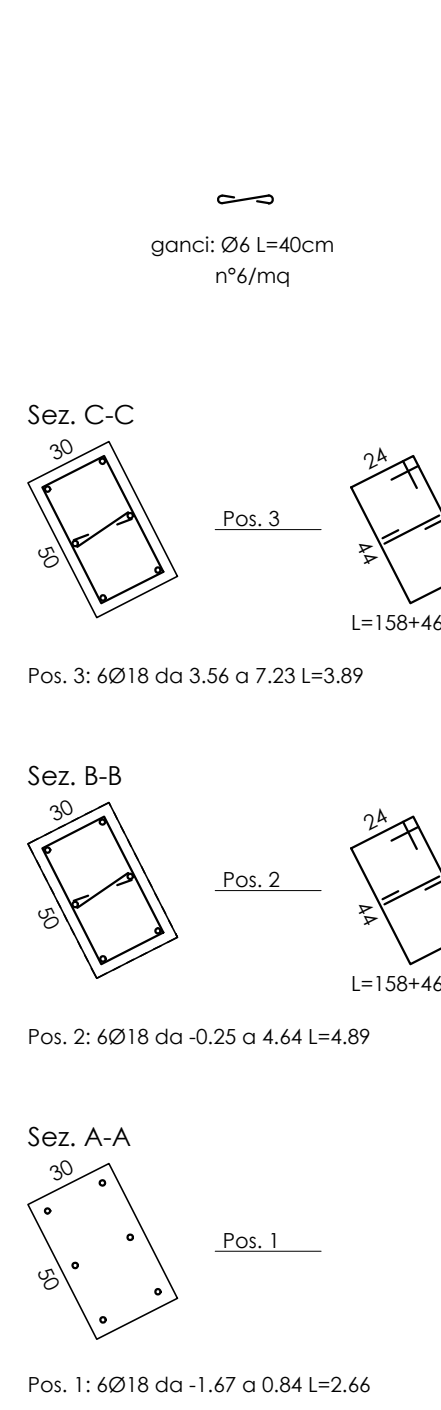
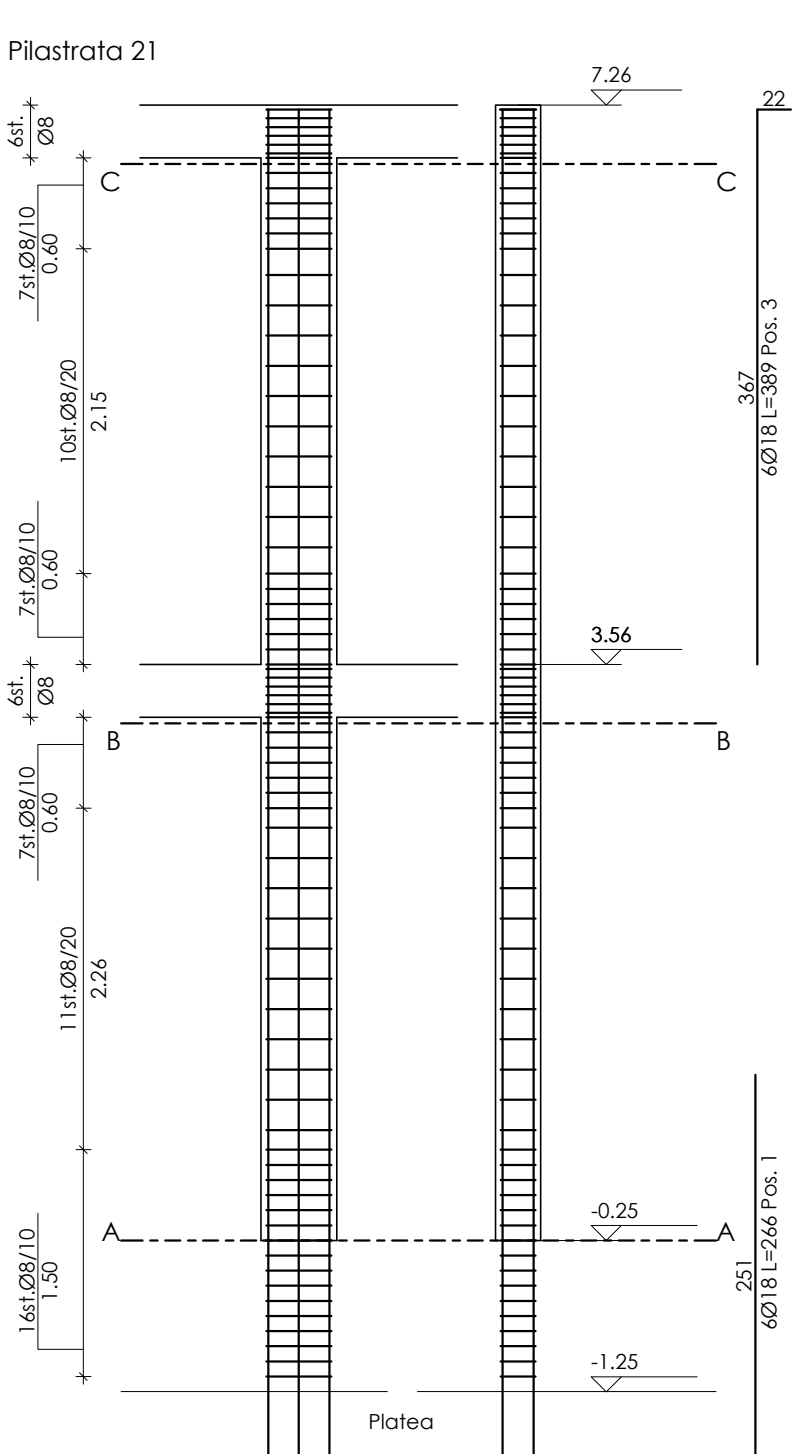
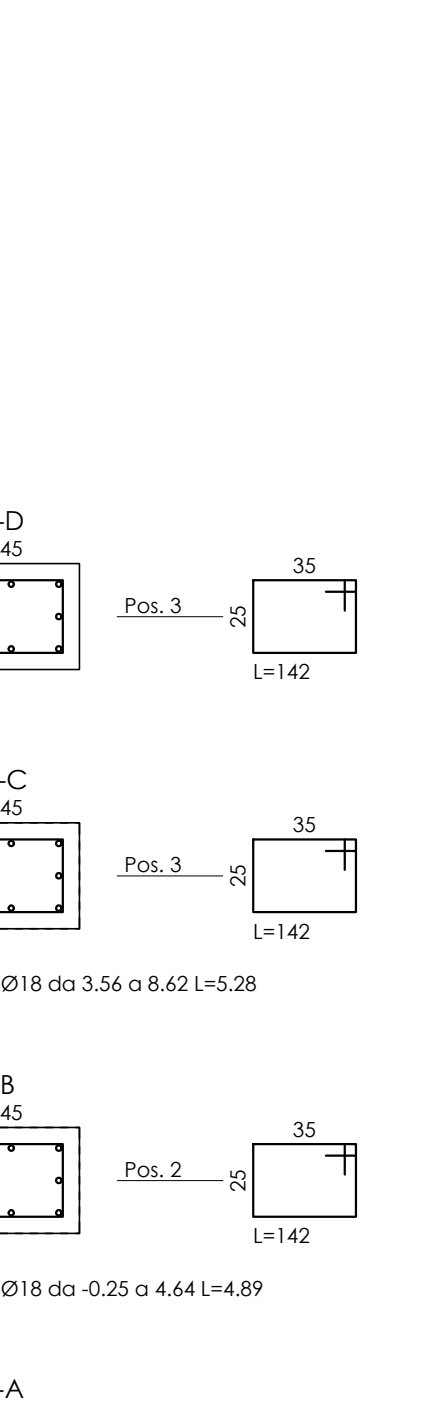
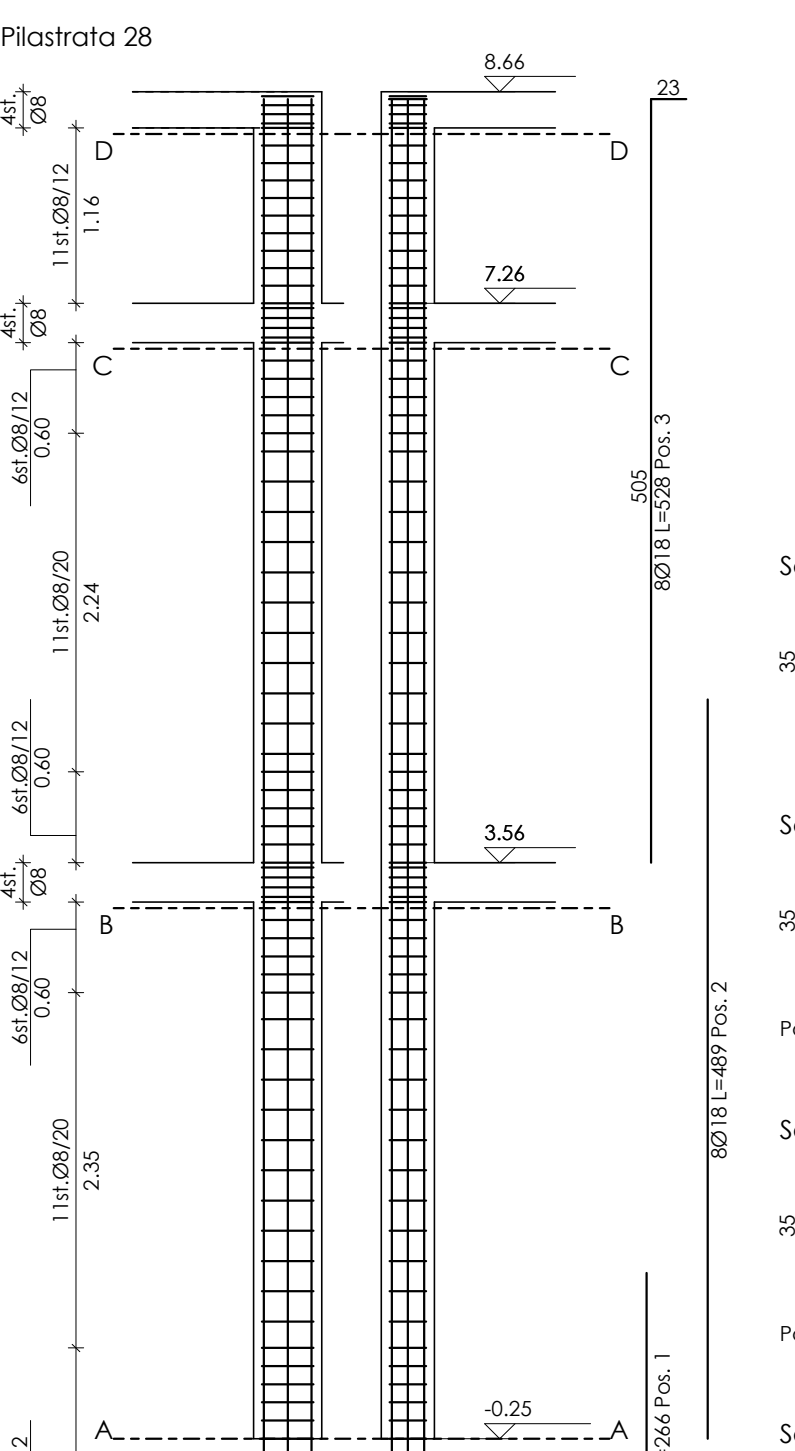
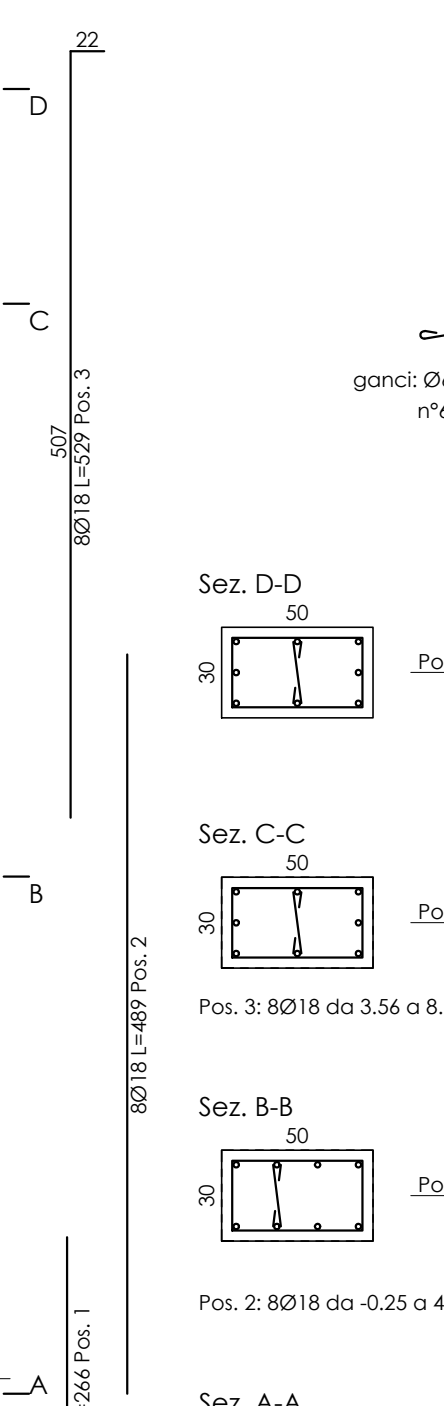
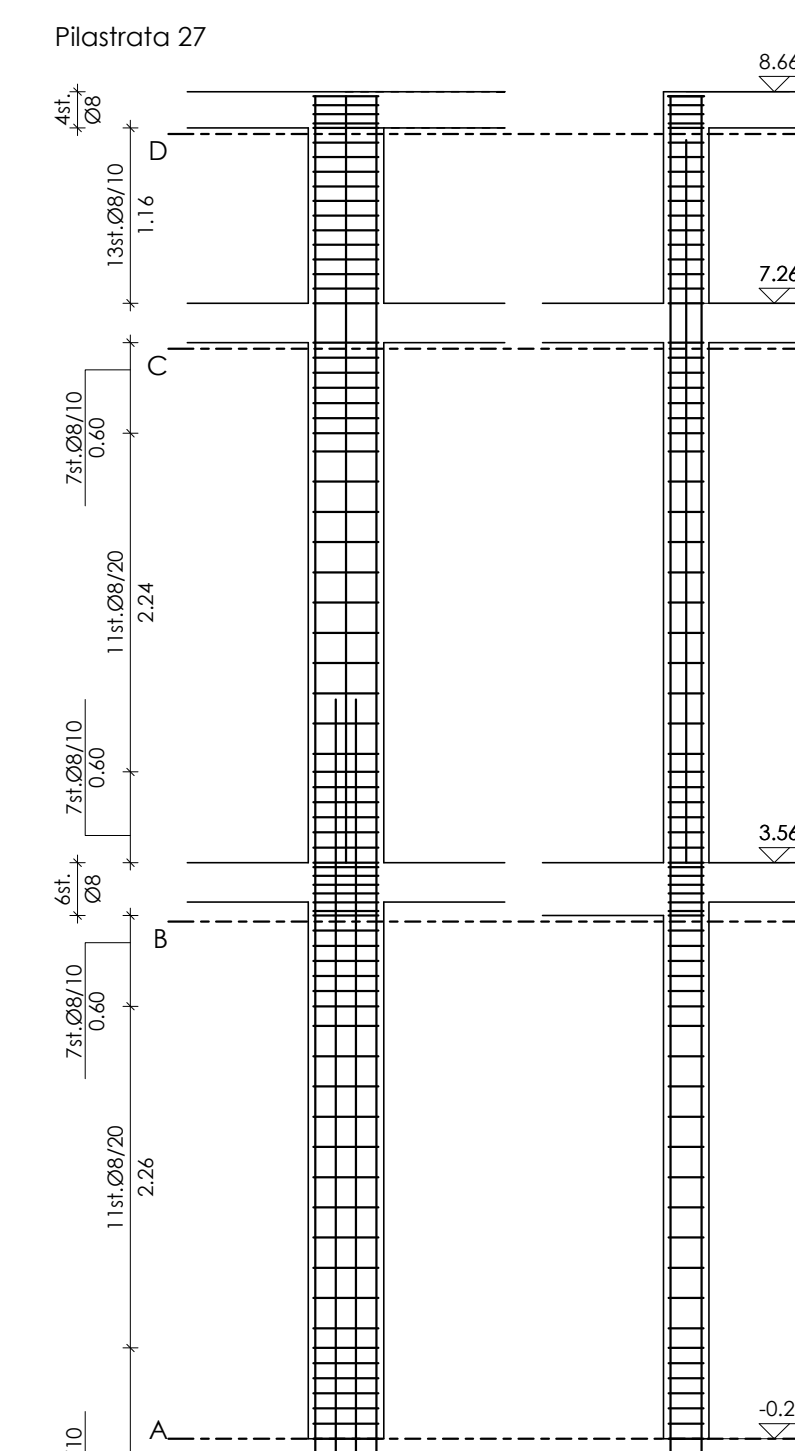
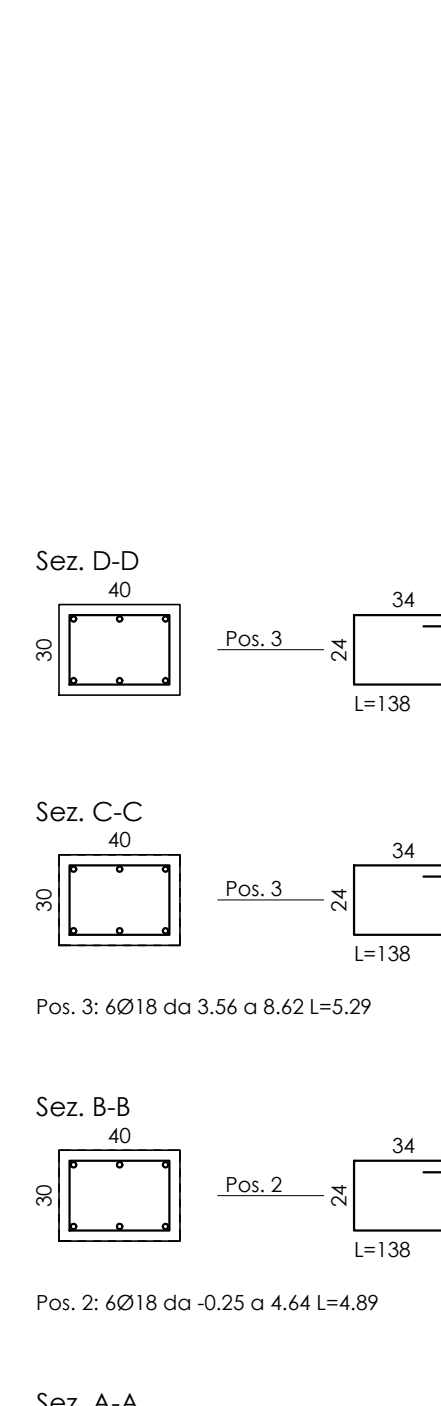
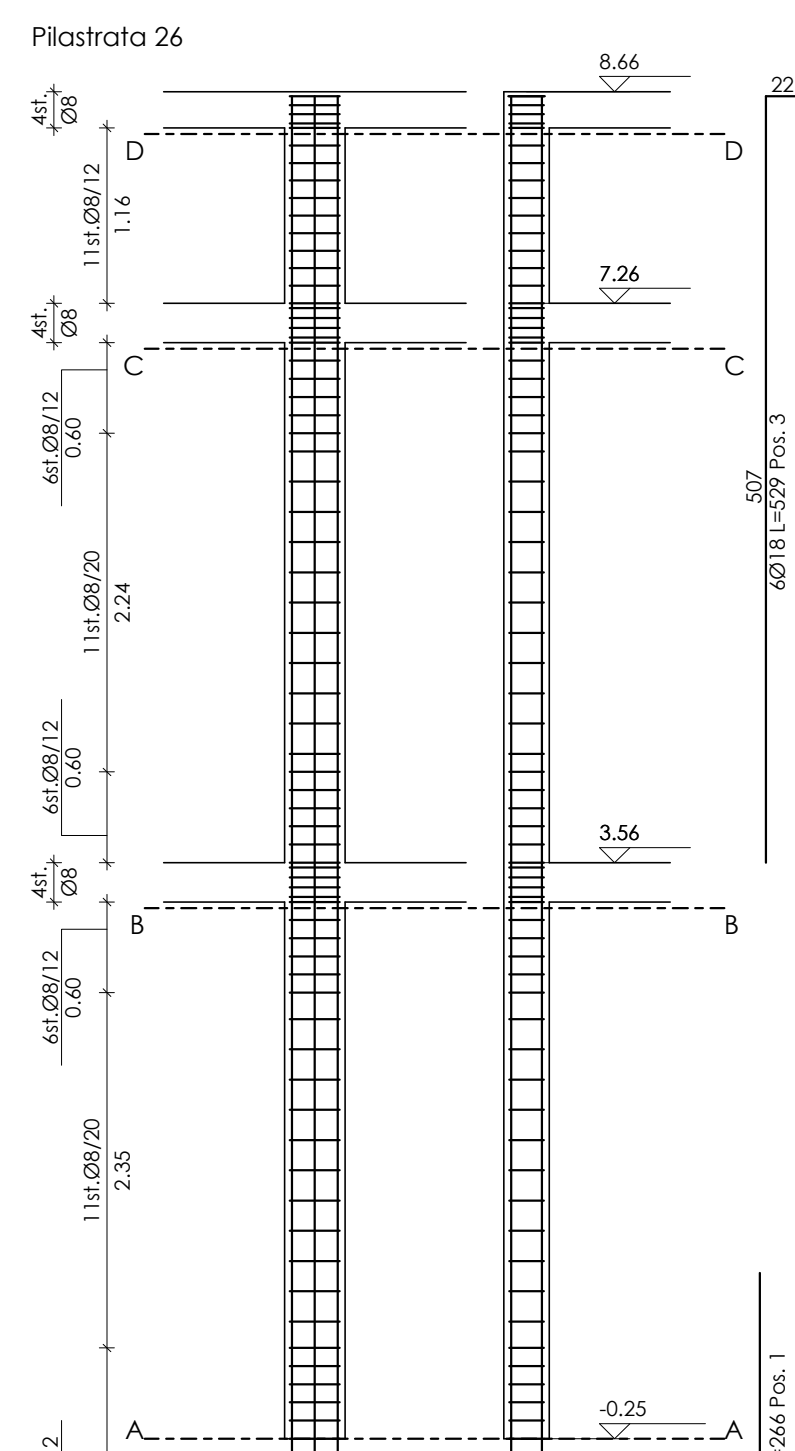
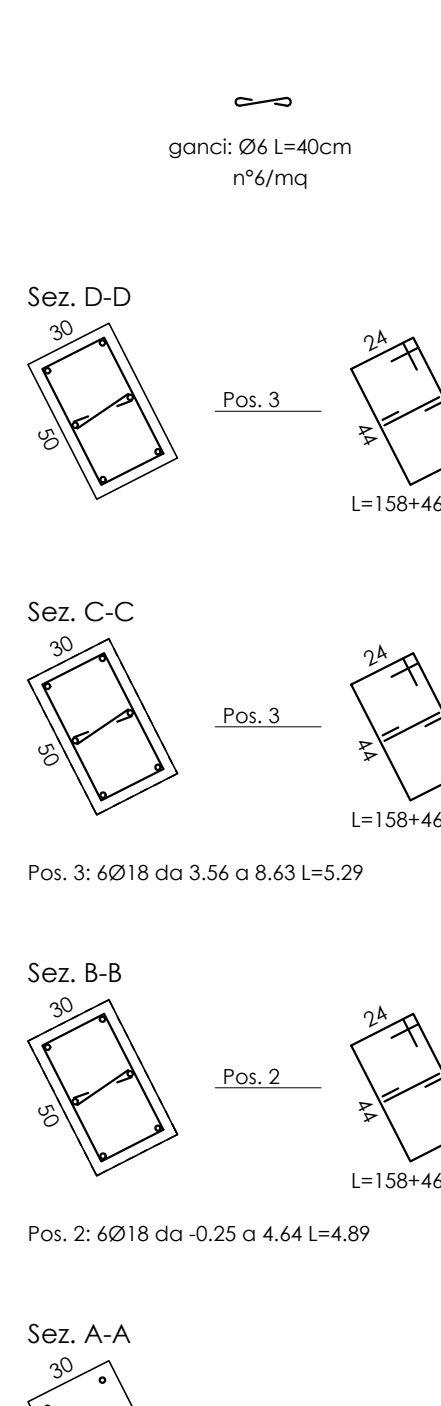
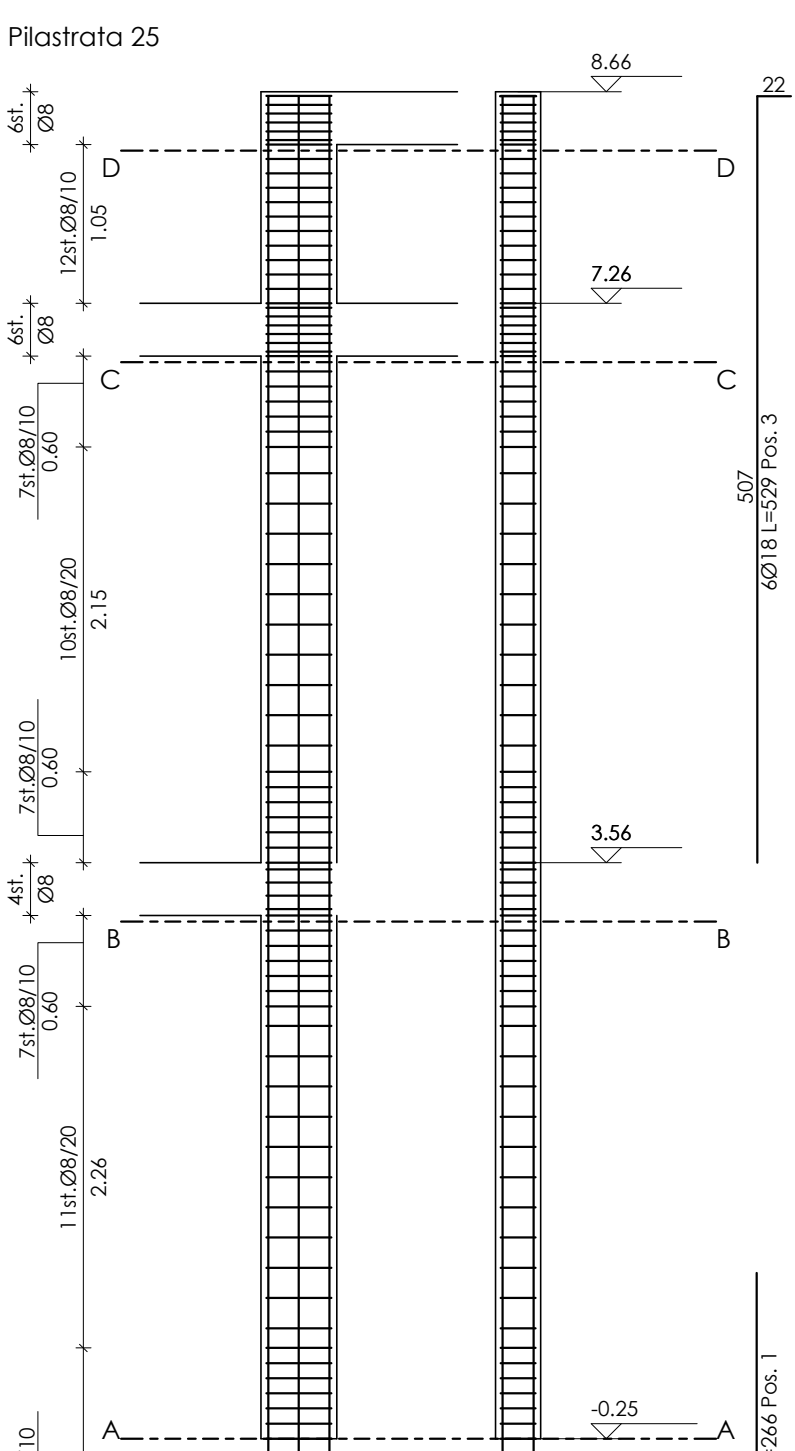


Setto S2-S3
Sezione A-A
Scala 1:50



Sezione B-B
Pianta
Scala 1:25



MATERIALI
- Calcestruzzo: C28/35
- Acciaio per opere in c.a. B450C controllato

NOTE
- Il capriero deve essere 3 cm minimo.
- Le quote sono espresse in cm, ov non specificato.

COMUNE DI SERAVEZZA
PROVINCIA DI LUCCA
PIO ISTITUTO CAMPANA
Azienda Pubblica di Servizio alla Persona

RIORGANIZZAZIONE DEGLI SPAZI INTERNI ED ESTERNI DEL FABBRICATO ADIACENTE ALLA RSA CON CONTESTUALE AMPLIAMENTO PER LA REALIZZAZIONE DEL NUOVO NUCLEO ALZHEIMER - I° LOTTO -

PROGETTO ESECUTIVO
ELABORATI GRAFICI STRUTTURALI

Il Committente:
Presidenza Pio Istituto Campana
Venturini Renzo

Il Progettista Strutturale:
Ing. Riccardo Feliciani

OGGETTO:
PILASTRE
SEZIONI
SETTO S2-S3

Scala 1:50
Scala 1:25
Scala 1:50-1:25

COMMITTENTE:
Residenza Ssola Sanitaria **Pio Istituto Campana**
Via F. Donati n. 100/116 55047 Seravezza (LU)

Disegno nr:
2.2s

Raggruppamento Temporaneo di Professionisti
Ing. Riccardo Feliciani - Arch. Giacomo Bacchi - Ing. Alberto Del Corra - Ing. Stefano Nadolfi